

# CHROMATOGRAPHIC IMMUNOASSAY (RAPID TEST)



Version:18 (English) 20250919

# PRODUCT CATALOGUE

---

Hangzhou AllTest Biotech Co., Ltd.



**HANGZHOU ALLTEST BIOTECH CO., LTD.** has a solid foundation with top-notch industry professionals, having proven expertise in innovation management including new introductions, be it a product or be it industry transforming process developments. We have been witness to as well as been part of core teams that have been responsible for transformations, which are critical to today's rapid tests as well as POCT business.

Some of them include industry-leading design control systems that are responsible for innovative products with high quality as well as validations protocols that form the core of stringent quality assessment systems.

HANGZHOU ALLTEST BIOTECH CO., LTD. has been created with the sole objective of benefitting the stakeholders in the healthcare industry with major stake in POCT business including Rapid Tests.

HANGZHOU ALLTEST BIOTECH CO., LTD. is committed to bring Innovative Solutions including convergence of Rapid Tests' ease with the power of modern day electronics, thereby helping the creation of new technological platforms as well as business processes that unlocks the true potential of amalgamation of technology and commerce with new milestones in techno-commercial sectors of POCT industry.

In a nutshell, with HANGZHOU ALLTEST BIOTECH CO., LTD. , you can "Relax" and leave the worries of today and tomorrow with better solutions for you than solutions available today.



# CONTENTS

## Certificates

(EU IVDR, EU List A, EU List B, EU OTC, USFDA, Health Canada, Australia TGA, Brazil ANVISA)

1-5

## New Integrated Device

6

## For Home Use (Over-The-Counter, OTC)

7-8

## For Diagnostic Use

9-18

### Fertility

9-10

### Gastrointestinal Diseases

11

### Tropical Diseases

12

### Hepatitis Markers

13

### Sexually Transmitted Infections (STIs)

13

### Blood Banking

13

### Respiratory Tract Diseases

14-15

### Other Infectious Diseases

16

### Tumor Markers

17

### Cardiac Markers

18

## For Employment and Insurance (E&I)

19-28

### Drugs of Abuse (Specimen: Urine)

19-26

### Drugs of Abuse (Specimen: Oral Fluid)

27-28

### Alcohol

28

## Harm Reduction & Forensic Use

29-31

### Drugs of Abuse (Specimen: Solid)

29

### Drugs of Abuse (Specimen: Whole Blood/Serum/Plasma)

30

### Drugs of Abuse (Specimen: Hair)

30

### Drugs of Abuse (Specimen: Drink)

31

### Stain Identification

31

## Health Check-Up

32



China GMP



ISO 13485 : 2016



ISO 9001 : 2015



Korea GMP



ANVISA GMP



EU IVDR (CE0123)



EU IVDD (CE0123)



EU IVDD (CE2934)



US FDA



Health Canada



Australia TGA



MDSAP



# Certificates

EU IVDR (CE0123)	Cat. No.	Specimen	Format	Pack	Class	Device Type
Adenovirus	IAD-N602	Feces	Cassette	20 T/25 T	B	PLU
Dengue Combo	IDEC-N425	WB/S/P	Cassette	10 T/25 T	C	PLU
Dengue IgG/IgM	IDEN-N402	WB/S/P	Cassette	10 T/25 T	B	PLU
Dengue NS1	IDES-N402	WB/S/P	Cassette	10 T/25 T	C	PLU
H.pylori Antibody	IHP-N402	WB/S/P	Cassette	25 T/40 T	B	PLU
H.pylori Antigen	IHP-N601	Feces	Dipstick	25 T	B	PLU
H.pylori Antigen	IHP-N602	Feces	Cassette	20 T/25 T	B	PLU
Stomach Health (H. pylori)	IHP-N602H	Feces	Cassette	1T/2T/5T/10T	C	ST
Stomach Health (H. pylori)	IHP-N607H	Feces	Cup	1T/2T/5T/10T	C	ST
Legionella pneumophila	ILEG-N102	Urine	Cassette	10 T/25 T	C	PLU
MONO	IMO-N402	WB/S/P	Cassette	25 T	C	PLU
Malaria P.f./Pan	IMPV-N402	WB	Cassette	20 T/25 T	C	PLU
Malaria P.f./P.v.	IMPV-N402	WB	Cassette	20 T/25 T	C	PLU
Rotavirus	IRO-N602	Feces	Cassette	20 T/25 T	B	PLU
Rotavirus and Adenovirus Combo	IRAC-N625	Feces	Cassette	25 T	B	PLU
Viral diarrhea	IRAC-N627H	Feces	Cup	1T/2T/5T/10T	C	PLU
(Rotavirus + Adenovirus) Combo						
Viral diarrhea (Norovirus+Rotavirus+ Adenovirus+Astrovirus) Combo	IMVD-N647H	Feces	Cup	1T/2T/5T/10T	C	ST
Influenza A+B	IIN-N502H	Nasal swab	Cassette	1T/5T/7T/10T/20T/25T	C	ST
S. pneumoniae Antigen	ISP-N102	Urine	Cassette	10 T/25 T	C	ST/NPT/PLU
Strep A	IST-N501	Throat Swab	Dipstick	25 T	B	NPT/PLU
Strep A	IST-N502	Throat Swab	Cassette	20 T	B	NPT/PLU
Strep A	ISTB-N501	Throat Swab	Dipstick	25 T	B	NPT/PLU
Strep A	ISTB-N502	Throat Swab	Cassette	20 T/25 T	B	NPT/PLU
Strep A	ISTB-N502H	Throat swab	Cassette	1T/5T/7T/10T/20T	C	ST
Salmonella typhi Antigen	ISTY-N602	Feces	Cassette	20 T/25 T	C	PLU
Syphilis	ISY-N401	WB/S/P	Dipstick	50 T	C	PLU
Syphilis	ISY-N402	WB/S/P	Cassette	25 T/40 T	C	PLU
FOB	TFO-N601	Feces	Dipstick	25 T	B	PLU
FOB	TFO-N602	Feces	Cassette	20 T/25 T	B	PLU
Bowel Health (FOB)	TFO-N602H	Feces	Cassette	1T/2T/5T/10T	C	ST
Bowel Health (FOB)	TFO-N607H	Feces	Cup	1T/2T/5T/10T	C	ST
CRP Semi-Quantitative	CCR-NT402	WB/S/P	Cassette	10 T/25 T	C	PLU
PCT	CPC-N302	S/P	Cassette	10 T/25 T	C	PLU
PCT	CPC-N402	WB/S/P	Cassette	10 T/25 T	C	PLU
Cardiac Troponin I	CTNI-N402	WB/S/P	Cassette	10 T/25 T	C	PLU
Ferritin	OFE-NR402Q	WB/S/P	Cassette	10 T/25 T	B	PLU
Multi-Drug 2~14 Drugs Rapid Test	DOA-N124~DOA-N1144	Urine	Panel	25 T	B	PLU

EU IVDD List A (CE2934)	Cat. No.	Specimen	Format	Pack
Blood Grouping (ABO&RhD)	OABD-402	Whole Blood	Cassette	25 T
HIV 1.2	IHI-402	WB/S/P	Cassette	40 T
HBsAg	IHBSG-402	WB/S/P	Cassette	40 T
HCV	IHC-402	WB/S/P	Cassette	40 T

EU IVDD List B (CE0123)	Cat. No.	Specimen	Format	Pack	Cut-off
Chlamydia	ICH-502	Swab/Urine	Cassette	20 T	/
CMV IgM	ICM-302	S/P	Cassette	40 T	/
Rubella IgM	IRM-302	S/P	Cassette	40 T	/
Toxo IgG/IgM	ITGM-302	S/P	Cassette	40 T	/
Toxo IgG/IgM	ITGM-402	WB/S/P	Cassette	40 T	/
ToRCH IgM Combo	ITOM-345	S/P	Cassette	25 T	/
PSA Qualitative	TPS-Q401	WB/S/P	Dipstick	25 T	4 ng/mL
PSA Qualitative	TPS-Q402	WB/S/P	Cassette	10 T	4 ng/mL
PSA Semi-quantitative	TPS-402	WB/S/P	Cassette	10 T	3-10 ng/mL

# Certificates

## EU IVDD (For Home Use) (CE0123 & CE1434)

### Female Fertility

	Cat. No.	Specimen	Format	Pack	Cut-off	Certificates			
Pregnancy (hCG)	FHC-101H	Urine	Dipstick	1 T	25 mIU/mL	CE 0123			
	FHC-F101H				20 mIU/mL	CE 0123			
	FHC-U101H				10 mIU/mL	CE 0123			
Pregnancy (hCG)	FHC-102H	Urine	Cassette	1 T	25 mIU/mL	CE 0123			
	FHC-F102H				20 mIU/mL	CE 0123			
	FHC-U102H				10 mIU/mL	CE 0123			
Digital hCG Pregnancy	FHC-E103H	Urine	Midstream	1 T	25 mIU/mL	CE 0123			
Pregnancy (hCG)	FHC-103H	Urine	Midstream	1 T	25 mIU/mL	CE 0123			
	FHC-F103H				20 mIU/mL	CE 0123			
	FHC-U103H				10 mIU/mL	CE 0123			
Pregnancy (hCG) with Indicator	FHC-103HI	Urine	Midstream	1 T	25 mIU/mL	CE 0123			
	FHC-U103HI				10 mIU/mL	CE 0123			
Ovulation (LH)	FLH-101H	Urine	Dipstick	5 T	40 mIU/mL	CE 0123			
	FLH-M101H				35 mIU/mL	CE 0123			
	FLH-U101H				30 mIU/mL	CE 0123			
	FLH-S101H				20 mIU/mL	CE 0123			
	FLH-102H	Urine	Cassette	5 T	40 mIU/mL	CE 0123			
	FLH-M102H				35 mIU/mL	CE 0123			
	FLH-U102H				30 mIU/mL	CE 0123			
	FLH-S102H				20 mIU/mL	CE 0123			
	FLH-103H				Urine	Midstream	5 T	40 mIU/mL	CE 0123
	FLH-M103H							35 mIU/mL	CE 0123
FLH-U103H	30 mIU/mL	CE 0123							
FLH-S103H	20 mIU/mL	CE 0123							
FSH	FFS-101H	Urine	Dipstick	2 T	25 mIU/mL	CE 0123			
	FFS-102H		Cassette	2 T	25 mIU/mL	CE 0123			
	FFS-103H		Midstream	2 T	25 mIU/mL	CE 0123			
Vaginal pH	IVPH-504H	Vaginal Secretion	Panel	1 T	/	CE 0123			

### COVID-19

	Cat. No.	Specimen	Format	Pack	Certificates
SARS-CoV-2 Antigen	INCP-502H	Nasal Swab	Cassette	1/2/5/7/10/ 15/20/25 T	CE 1434
SARS-CoV-2 & Influenza A+B Antigen Combo	ISIN-525H	Nasal Swab	Cassette		CE 1434
COVID-19 Antigen	ICOV-802H	Oral fluid	Cassette		CE 1434
SARS-CoV-2 (COVID-19) Antigen	ICOV-803H	Saliva	Device		CE 1434

### Others

	Cat. No.	Specimen	Format	Pack	Cut-off	Certificates
<i>H. pylori</i> Antigen	IHP-602H	Feces	Cassette	1 T	/	CE 0123
FOB	TFO-602H	Feces	Cassette	1 T	50 ng/ml	CE 0123
	TFO-601H	Feces	Dipstick	1 T		
Ferritin	OFE-402H	WB	Cassette	1 T	30 ng/mL	CE 0123
SP-10 Male Fertility	OSP-902H	Sperm	Cassette	1 T/2 T	15 million/mL	CE 0123
Sperm Concentration	OSC-902H	Sperm	Cassette	1 T/2 T	15 million/mL	CE 0123
TSH	OTS-402H	WB	Cassette	1 T	5 µIU/mL	CE 0123
Vitamin D	OVD-402H	WB	Cassette	1 T	10-30-100 ng/mL	CE 0123
Urinary Tract Infections (Analytes: LEU,BLO,NIT,PRO)	U031-04H	Urine	Dipstick	1 T	/	CE 0123

# Certificates

## US FDA 510K

### For Prescription Use

#### Drugs of Abuse (Specimen: Urine) Moderate

- Fentanyl (FYL) - 1 ng/mL (Cassette)
- Amphetamine (AMP) - 500 ng/mL (Dipstick/Dipcard)
- Amphetamine (AMP) - 1000 ng/mL (Dipcard)
- Buprenorphine (BUP) - 10 ng/mL (Dipstick/Dipcard)
- Secobarbital (BAR) - 300 ng/mL (Dipstick/Dipcard)
- Benzodiazepines (BZO) - 300 ng/mL (Dipstick/Dipcard)
- Cocaine (COC) - 150 ng/mL (Dipstick/Dipcard)
- Cocaine (COC) - 300 ng/mL (Dipcard)
- Ethylenediamine-dimethylphosphinic acid (EDDP)- 300 ng/mL (Dipstick/Dipcard)
- Methamphetamine (MET) - 500 ng/mL (Dipstick/Dipcard)
- Methamphetamine (MET) - 1000 ng/mL (Dipcard)
- Ecstasy (MDMA) - 500 ng/mL (Dipstick/Dipcard)
- Morphine (MOP) - 300 ng/mL, 2000 ng/mL (Dipstick/Dipcard)
- Methadone (MTD) - 300 ng/mL (Dipstick/Dipcard)
- Oxycodone (OXY) - 100 ng/mL (Dipstick/Dipcard)
- Phencyclidine (PCP) - 25 ng/mL (Dipstick/Dipcard)
- Nortriptyline (TCA) - 1000 ng/mL (Dipstick/Dipcard)
- Marijuana (THC) - 50 ng/mL (Dipstick/Dipcard)
- Multi-Drug 2~18 Drugs Rapid Test With/Without Adulteration (Dipcard/Cup) (AMP500/1000, BUP10, BAR300, BZO300, COC150/300, EDDP300, MET500/1000, MDMA500, MOP/OPI 300/2000, MTD300, OXY100, PCP25, TCA1000, THC50), TRA100, PPX300, FYL1, 6MAM10)

#### Fertility (Specimen: Urine/Serum)

- hCG Pregnancy -20mIU/mL for Urine, 10mIU/mL for Serum (Cassette)\*

\* **Waived** For Urine / **Moderate** For Serum

### OTC Cleared

#### Drugs of Abuse (Specimen: Urine) Waived

- Fentanyl (FYL) - 1 ng/mL (Cassette)
- Amphetamine (AMP) - 500 ng/mL (Dipstick/Dipcard)
- Amphetamine (AMP) - 1000 ng/mL (Dipcard)
- Buprenorphine (BUP) - 10 ng/mL (Dipstick/Dipcard)
- Secobarbital (BAR) - 300 ng/mL (Dipstick/Dipcard)
- Benzodiazepines (BZO) - 300 ng/mL (Dipstick/Dipcard)
- Cocaine (COC) - 150 ng/mL (Dipstick/Dipcard)
- Cocaine (COC) - 300 ng/mL (Dipcard)
- Ethylenediamine-dimethylphosphinic acid (EDDP) - 300 ng/mL (Dipstick/Dipcard)
- Methamphetamine (MET) - 500 ng/mL (Dipstick/Dipcard)
- Methamphetamine (MET) - 1000 ng/mL (Dipcard)
- Ecstasy (MDMA) - 500 ng/mL (Dipstick/Dipcard)
- Morphine (MOP) - 300 ng/mL, 2000 ng/mL (Dipstick/Dipcard)
- Methadone (MTD) - 300 ng/mL (Dipstick/Dipcard)
- Oxycodone (OXY) - 100 ng/mL (Dipstick/Dipcard)
- Phencyclidine (PCP) - 25 ng/mL (Dipstick/Dipcard)
- Nortriptyline (TCA) - 1000 ng/mL (Dipstick/Dipcard)
- Marijuana (THC) - 50 ng/mL (Dipstick/Dipcard)
- Multi-Drug 2~18 Drugs Rapid Test With/Without Adulteration (Dipcard/Cup) (AMP500/1000, BUP10, BAR300, BZO300, COC150/300, EDDP300, MET500/1000, MDMA500, MOP/OPI 300/2000, MTD300, OXY100, PCP25, TCA1000, THC50), TRA100, PPX300, FYL1, 6MAM10)

#### Fertility (Specimen: Urine) Waived

- hCG Pregnancy - 25mIU/mL (Midstream)
- hCG Early Pregnancy - 10mIU/mL (Midstream)



# Certificates

## Health Canada

### For Professional Use

#### Class II (For Lab)

- hCG Pregnancy (Urine)
- hCG Pregnancy (S/P/U)
- LH Ovulation (Urine)
- RSV (Nasal Swab/Nasal Aspirate)
- Influenza A+B (Swab/Nasal Aspirate)
- Influenza A+B & H1N1 Combo (Swab)
- MONO (WB/S/P)
- *M.pneumoniae* IgG (WB/S/P)
- *M.pneumoniae* Ag (Throat Swab)
- Adenovirus, RSV and Influenza A+B Combo (Nasopharyngeal Swab)
- *H. pylori* Ag (Feces)
- *H. pylori* Ab (WB/S/P)
- Rotavirus (Feces)
- Rotavirus & Adenovirus Combo (Feces)
- Norovirus, Rotavirus & Adenovirus Combo (Feces)
- Norovirus, Rotavirus, Adenovirus and Astrovirus Combo (Feces)
- Filariasis (WB/S/P)
- Malaria P.f. / Pan (WB)
- Malaria P.f. / P.v. (WB)
- Malaria P.f./P.v./Pan (WB)
- Leptospira Ab (WB/S/P)
- Typhoid Ab (WB/S/P)
- Lyme Ab (WB/S/P)
- D-Dimer (WB/P)
- Procalcitonin (PCT) (WB/S/P)
- C-Reactive Protein (CRP) (WB/S/P)
- Vitamin D (WB)
- HbA1c (WB)
- TSH (WB/S/P)
- Alcohol (ALC) (Urine)
- Acetaminophen (ACE) (Urine)
- Fentanyl (FYL) (Urine)
- $\gamma$ -Hydroxybutyric acid (GHB) (Urine)
- Methamphetamine (MET) (Urine)
- Psilocybin (PY) (Urine)
- Marijuana (THC) (Urine)
- Xylazine (XYL) (Urine)
- Zopiclone (ZOP) (Urine)
- DOA Multi-Drug (Cassette) (Urine)
- DOA Multi-Drug (Panel) (Urine)
- DOA Multi-Drug (One Step Cup) (Urine)
- DOA Multi-Drug (Two Step Cup) (Urine)
- Alcohol (ALC) (Oral Fluid)
- Marijuana (THC) (Oral Fluid)
- DOA Multi-Drug (Device) (Oral Fluid)
- Xylazine (XYL) (Urine & Solid)
- Multi-Drug (Dipstick) (XYL+FYL) (Urine & Solid)

#### Class III (For POC&Lab)

- Strep A (Throat Swab)
- Methamphetamine (MET) (Urine)
- DOA Multi-Drug (Panel) (Urine)
- DOA Multi-Drug (One Step Cup) (Urine)
- DOA Multi-Drug (Two Step Cup) (Urine)

#### Class IV (For POC)

- SARS-COV-2 Antigen (Swab)
- SARS-COV-2 Antigen Control (Swab)

#### For Self-Testing Use

- hCG Pregnancy (Urine)
- Digital hCG Pregnancy (Urine)
- LH Ovulation (Urine)
- COVID-19 Antigen (Nasal Swab)
- Vitamin D (WB)

## Australia TGA

### For Professional Use

- hCG Pregnancy (Urine)
- *H. pylori* Antibody (WB/S/P)
- *H. pylori* Antigen (Feces)
- HCV (WB/S/P)
- SARS-COV-2 Antigen (Nasal Swab)
- COVID-19 Antigen (Oral Fluid)
- SARS-COV-2 Antigen Control (Swab / Liquid)
- FOB (Feces)
- Transferrin and FOB Combo (Feces)
- Hb+Hb-Hp Combo (Feces)
- Transferrin/FOB and Hb-Hp Combo (Feces)
- Ferritin (WB/S/P)
- C-reactive protein (CRP) Semi-Quantitative (WB/S/P)
- Procalcitonin (PCT) (WB/S/P)
- Virus DNA/RNA Extraction Kit
- Viral Transport Medium (Non-inactivated Type)

### For Self-Testing Use

- hCG Pregnancy (Urine)
- LH Ovulation (Urine)
- FSH (Urine)
- SARS-COV-2 Antigen (Nasal Swab)
- COVID-19 Antigen (Oral Fluid)
- SARS-COV-2 & Influenza A+B Combo (Nasal Swab)
- Vitamin D (WB)
- Ferritin (WB)
- Urinary Tract Infections (Urine)
- Vaginal pH (Vaginal Discharge)





## New Integrated Device

Viral Diarrhea

Bleeding Gastrointestinal Disorders

Bacteria Infection

IBD (Inflammatory Bowel Disease)

Respiratory Infectious Diseases



# New Integrated Device

Viral Diarrhea		Cat. No.	Specimen	Format	Pack	Certificates
Rotavirus Rapid Test		IRO-607	Feces	Cup	1T/10T	CE
Norovirus Rapid Test		INO-607	Feces	Cup	1T/10T	CE
Adenovirus Rapid Test		IAD-607	Feces	Cup	1T/10T	CE
Astrovirus Rapid Test		IAS-607	Feces	Cup	1T/10T	CE
Rotavirus and Adenovirus Combo Rapid Test		IRAC-627	Feces	Cup	1T/10T	CE
Norovirus/Rotavirus/Adenovirus Combo Rapid Test		INRA-637	Feces	Cup	1T/10T	CE
Norovirus, Rotavirus, Adenovirus and Astrovirus Combo Rapid Test		IMVD-647	Feces	Cup	1T/10T	CE/HC/ANVISA
Entamoeba histolytica Rapid Test		IEH-607	Feces	Cup	1T/10T	CE
Giardia Lamblia Rapid Test		IGL-607	Feces	Cup	1T/10T	CE
Cryptosporidium Rapid Test		ICR-607	Feces	Cup	1T/10T	CE
Entamoeba+Giardia+Crypto Combo Rapid Test		IEGC-637	Feces	Cup	1T/10T	CE
Bacteria Infection		Cat. No.	Specimen	Format	Pack	Certificates
<i>H. pylori</i> Antigen Rapid Test		IHP-607	Feces	Cup	1T/10T	CE/HC/ANVISA
<i>Vibrio cholerae</i> O1/O139 Combo Rapid Test		IVCAB-627	Feces	Cup	1T/10T	CE
<i>Shigella</i> Flexneri Antigen Rapid Test		ISHF-607	Feces	Cup	1T/10T	CE
<i>Shigella</i> Sonnei Antigen Rapid Test		ISHS-607	Feces	Cup	1T/10T	CE
<i>Shigella</i> Rapid Test		ISH-627	Feces	Cup	1T/10T	CE
<i>Campylobacter</i> Rapid Test		ICAM-607	Feces	Cup	1T/10T	CE
<i>Salmonella typhi</i> Antigen Rapid Test		ISTY-607	Feces	Cup	1T/10T	CE
<i>Salmonella paratyphi</i> Antigen Rapid Test		ISPT-607	Feces	Cup	1T/10T	CE
<i>Salmonella typhi</i> and <i>paratyphi</i> Antigen Combo Rapid Test		ISTP-627	Feces	Cup	1T/10T	CE
<i>Salmonella typhi</i> and <i>paratyphi</i> B Antigen Combo Rapid Test		ISTPB-627	Feces	Cup	1T/10T	CE
<i>Clostridium difficile</i> GDH+Toxin A+Toxin B Combo Rapid Test		ICD-637	Feces	Cup	1T/10T	CE
Bleeding Gastrointestinal Disorders		Cat. No.	Specimen	Format	Pack	Certificates
FOB Rapid Test		TFO-607	Feces	Cup	1T/10T	CE/ANVISA
Transferrin/FOB Combo Rapid Test		TTFC-607	Feces	Cup	1T/10T	CE
Calprotectin/Transferrin/FOB/Hb-Hp Combo Rapid Test		TCTBP-647	Feces	Cup	1T/10T	CE
Transferrin/FOB and Calprotectin Combo Rapid Test		TCTF-627	Feces	Cup	1T/10T	CE
Transferrin/FOB and Hb-Hp Combo Rapid Test		TTFH-627	Feces	Cup	1T/10T	CE
IBD (Inflammatory Bowel Disease)		Cat. No.	Specimen	Format	Pack	Certificates
Calprotectin Rapid Test		OICAL-607	Feces	Cup	1T/10T	CE
Lactoferrin Rapid Test		OLF-607	Feces	Cup	1T/10T	CE
Calprotectin and Lactoferrin Combo Rapid Test		OIBD-627	Feces	Cup	1T/10T	CE
Respiratory Infectious Diseases		Cat. No.	Specimen	Format	Pack	Certificates
Respiratory Infectious Diseases Rapid Test ( <i>Mycoplasma pneumoniae</i> )		IMP-507	Swab	Cup	10 T	CE
Respiratory Infectious Diseases Rapid Test (RSV)		IRS-507	Swab	Cup	10 T	CE
Respiratory Infectious Diseases Rapid Test (Adenovirus)		IAD-507	Swab	Cup	10 T	CE
Respiratory Infectious Diseases Rapid Test (SARS-CoV-2)		INCP-507	Swab	Cup	10 T	CE
Respiratory Infectious Diseases Rapid Test (Influenza A+B)		IIN-507	Swab	Cup	10 T	CE
Respiratory Infectious Diseases Rapid Test (HPIV)		IPIV-507	Swab	Cup	10 T	CE
Respiratory Infectious Diseases Rapid Test (HMPV)		IHMPV-507	Swab	Cup	10 T	CE
Respiratory Infectious Diseases Rapid Test (RhV)		IRHV-507	Swab	Cup	10 T	CE
Respiratory Infectious Diseases Rapid Test ( <i>Mycoplasma pneumoniae</i> /RhV)		IMR-507	Swab	Cup	10 T	CE
Respiratory Infectious Diseases Rapid Test (Adeno/HPIV/RSV/COVID-19/MP/RhV/Flu B/Flu A/HMPV)		IRT-5X7(X:2-6)	Swab	Cup	10 T	CE

HC: Health Canada ; ANVISA: Brazil ANVISA

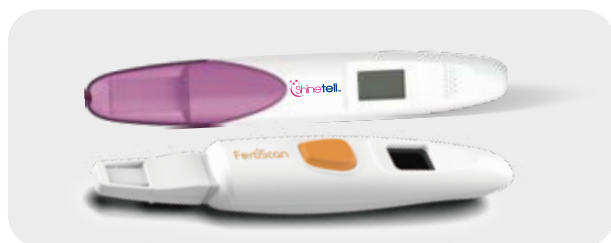




# For Home Use

	Cat. No.	Specimen	Format	Pack	Cut off	Certificates
Pregnancy (hCG)	FHC-101H	Urine	Dipstick	1 T	25mIU/mL	CE0123/TGA/ANVISA
Pregnancy (hCG)	FHC-F101H	Urine	Dipstick	1 T	20mIU/mL	CE0123/TGA
Pregnancy (hCG) Enhanced Sensitivity	FHC-U101H	Urine	Dipstick	1 T	10mIU/mL	CE0123/TGA
Pregnancy (hCG)	FHC-102H	Urine	Cassette	1 T	25mIU/mL	CE0123/TGA/ANVISA
Pregnancy (hCG)	FHC-F102H	Urine	Cassette	1 T	20mIU/mL	CE0123/TGA
Pregnancy (hCG) Enhanced Sensitivity	FHC-U102H	Urine	Cassette	1 T	10mIU/mL	CE0123/TGA/ANVISA
Digital hCG Pregnancy	FHC-E103H	Urine	Midstream	1 T	25mIU/mL	CE0123/HC/TGA/ANVISA
Pregnancy (hCG)	FHC-103H	Urine	Midstream	1 T	25mIU/mL	CE0123/FDA/HC/TGA/ANVISA
Pregnancy (hCG)	FHC-F103H	Urine	Midstream	1 T	20mIU/mL	CE0123/TGA
Pregnancy (hCG) Enhanced Sensitivity	FHC-U103H	Urine	Midstream	1 T	10mIU/mL	CE0123/HC/TGA
Pregnancy (hCG)	FHC-103HI	Urine	Midstream With Indicator	1 T	25mIU/mL	CE0123/TGA
Pregnancy (hCG) Enhanced Sensitivity	FHC-U103HI	Urine	Midstream With Indicator	1 T	10mIU/mL	CE0123/TGA/ANVISA
Ovulation (LH)	FLH-101H	Urine	Dipstick	5 T	40mIU/mL	CE0123/TGA
Ovulation (LH)	FLH-M101H	Urine	Dipstick	5 T	35mIU/mL	CE0123/TGA
Ovulation (LH) Enhanced Sensitivity	FLH-U101H	Urine	Dipstick	5 T	30mIU/mL	CE0123/TGA
Ovulation (LH)	FLH-S101H	Urine	Dipstick	5 T	20mIU/mL	CE0123
Ovulation (LH)	FLH-102H	Urine	Cassette	5 T	40mIU/mL	CE0123/TGA
Ovulation (LH)	FLH-M102H	Urine	Cassette	5 T	35mIU/mL	CE0123/TGA
Ovulation (LH) Enhanced Sensitivity	FLH-U102H	Urine	Cassette	5 T	30mIU/mL	CE0123/TGA/ANVISA
Ovulation (LH)	FLH-S102H	Urine	Cassette	5 T	20mIU/mL	CE0123
Ovulation (LH)	FLH-103H	Urine	Midstream	5 T	40mIU/mL	CE0123/HC/TGA
Ovulation (LH)	FLH-M103H	Urine	Midstream	5 T	35mIU/mL	CE0123/TGA
Ovulation (LH) Enhanced Sensitivity	FLH-U103H	Urine	Midstream	5 T	30mIU/mL	CE0123/TGA/ANVISA
Ovulation (LH)	FLH-S103H	Urine	Midstream	5 T	20mIU/mL	CE0123
Digital Ovulation	FLH-E103H	Urine	Midstream	7T/10T/20T	40 mIU/mL	N/A
FSH	FFS-101H	Urine	Dipstick	2 T	25mIU/mL	CE0123/TGA
FSH	FFS-102H	Urine	Cassette	2 T	25mIU/mL	CE0123/TGA
FSH	FFS-103H	Urine	Midstream	2 T	25mIU/mL	CE0123/TGA/ANVISA
AMH	FAMH-402H	WB	Cassette	1T	/	Non-CE
Vaginal pH	IVPH-504H	Vaginal Secretion	Panel	1 T	/	CE0123/TGA
Sperm Concentration	OSC-902H	Sperm	Cassette	1 T/2 T	15million/mL	CE0123
SP-10 Male Fertility	OSP-902H	Sperm	Cassette	1 T/2 T	15million/mL	CE0123/ANVISA

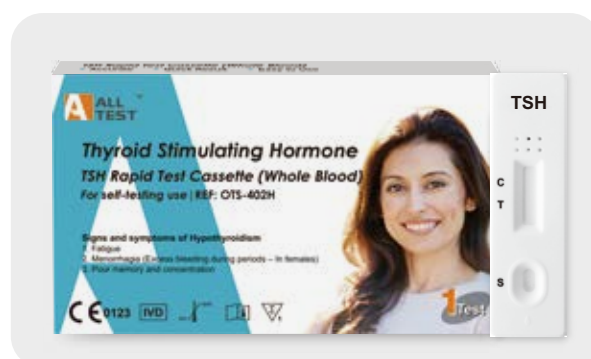
HC: Health Canada ; TGA: Australia TGA ; ANVISA: Brazil ANVISA



# For Home Use

	Cat. No.	Specimen	Format	Pack	Cut off	Certificates
Vitamin D	OVD-402H	WB	Cassette	1 T	10-30-100ng/mL	CE0123/HC/TGA/ANVISA
HIV 1.2	IHI-402H	WB	Cassette	1 T	/	N/A
HIV 1.2	IHI-102H	Urine	Cassette	1 T	/	N/A
HIV 1.2	IHI-802H	Oral Fluid	Cassette	1 T	/	N/A
HIV 1.2	IHI-403H	WB	Device	1 T	/	N/A
Syphilis	ISY-402H	WB	Cassette	1 T	/	N/A
TSH	OTS-402H	WB	Cassette	1 T	5µIU/mL	CE0123
Urinary Tract Infections	U031-04H	Urine	Dipstick	1 T	LEU,BLO,NIT,PRO	CE0123/TGA
Ferritin	OFE-402H	WB	Cassette	1 T	30ng/mL	CE0123/TGA
<i>H. pylori</i> Antigen	IHP-602H	Feces	Cassette	1 T	/	CE0123
FOB	TFO-602H	Feces	Cassette	1 T	50ng/mL	CE0123
FOB	TFO-601H	Feces	Dipstick	1 T	50ng/mL	CE0123
Prostate Specific Antigen (PSA)	TPS-403H	WB	Device	1T	4 ng/mL	N/A
SARS-CoV-2 S-RBD IgG Antibody	ICSG-402H	WB	Cassette		/	N/A
SARS-CoV-2 Antigen	INCP-502H	Nasal Swab	Cassette		/	CE1434/HC/TGA/ANVISA
COVID-19 Antigen	ICOV-802H	Oral fluid	Cassette	1/2/5/7/10/ 15/20/25 T	/	CE1434/TGA/ANVISA
SARS-CoV-2 (COVID-19) Antigen	ICOV-803H	Saliva	Cassette		/	CE1434/ANVISA
SARS-CoV-2 and Influenza A+B Antigen Combo	ISIN-525H	Nasal Swab	Cassette		/	CE1434/TGA
Norovirus, Rotavirus, Adenovirus and Astrovirus Combo Rapid Test	IMVD-647H	Feces	Cup	1T	/	N/A
<i>H. pylori</i> Antigen Rapid Test	IHP-607H	Feces	Cup	1T	/	N/A
FOB Rapid Test	TFO-607H	Feces	Cup	1T	/	N/A
Transferrin/FOB Combo Rapid Test	TTFC-607H	Feces	Cup	1T	/	N/A
Transferrin/FOB and Calprotectin Combo Rapid Test	TCTF-627H	Feces	Cup	1T	/	N/A
Calprotectin Rapid Test	OCAL-607H	Feces	Cup	1T	/	N/A
Stomach Health ( <i>H. pylori</i> )	IHP-N602H	Feces	Cassette	1T/2T/5T/10T	/	CE0123
Stomach Health ( <i>H. pylori</i> )	IHP-N607H	Feces	Cup	1T/2T/5T/10T	/	CE0123
Viral diarrhea (Rotavirus + Adenovirus) Combo	IRAC-N627H	Feces	Cup	1T/2T/5T/10T	/	CE0123
Viral diarrhea (Norovirus+Rotavirus +Adenovirus+Astrovirus) Combo	IMVD-N647H	Feces	Cup	1T/2T/5T/10T	/	CE0123
Influenza A+B	IIN-N502H	Nasal swab	Cassette	1T/5T/7T/10T/20T/25T	/	CE0123
Strep A	ISTB-N502H	Throat swab	Cassette	1T/5T/7T/10T/20T	/	CE0123
Bowel Health (FOB)	TFO-N602H	Feces	Cassette	1T/2T/5T/10T	/	CE0123
Bowel Health (FOB)	TFO-N607H	Feces	Cup	1T/2T/5T/10T	/	CE0123

HC: Health Canada ; TGA: Australia TGA ; ANVISA: Brazil ANVISA





## For Diagnostic Use

**Fertility**

---

**Respiratory Tract Diseases**

---

**Gastrointestinal Diseases**

---

**Other Infectious Diseases**

---

**Tropical Diseases**

---

**Tumor Markers**

---

**Hepatitis Markers**

---

**Cardiac Markers**

---

**Sexually Transmitted Infections (STIs)**

---

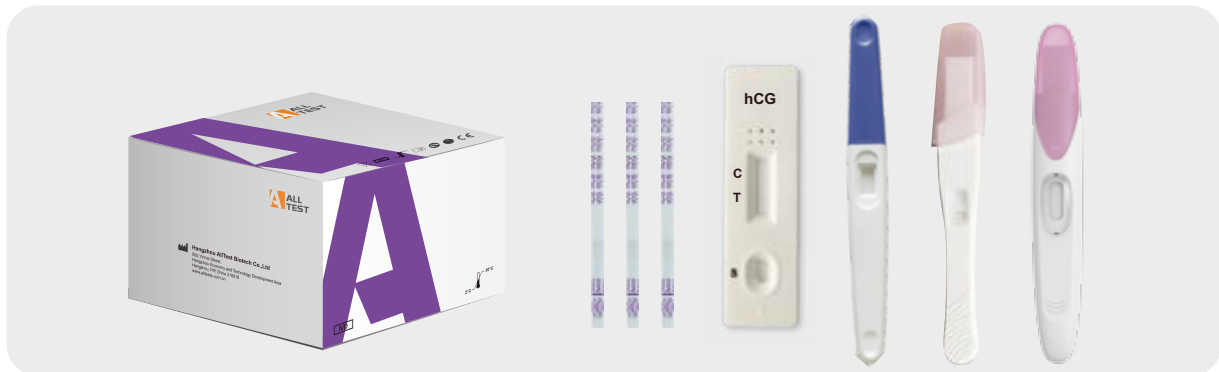
# Fertility

## For Diagnostic Use

### Female Fertility

	Cat. No.	Cut-Off	Specimen	Format	Pack	Certificates
<b>hCG Pregnancy</b>	FHC-101	20 mIU/mL, 25 mIU/mL*	Urine	Dipstick	50 T/100 T	CE/HC/TGA/ANVISA
	FHC-A101	40 mIU/mL				
	FHC-B101	200 mIU/mL				
	FHC-C101	500 mIU/mL	Urine	Dipstick	50 T/100 T	CE
	FHC-D101	2000 mIU/mL				
	FHC-U101	10 mIU/mL				
	FHC-111	20 mIU/mL, 25 mIU/mL*	Urine	Dipstick (Canister Pack)	25 T	CE
	FHC-U111	10 mIU/mL				
	FHC-102	20 mIU/mL, 25 mIU/mL*	Urine	Cassette	40 T	CE/HC/TGA
	FHC-A102	40 mIU/mL				
	FHC-B102	200 mIU/mL				
	FHC-C102	500 mIU/mL	Urine	Cassette	40 T	CE
	FHC-D102	2000 mIU/mL				
	FHC-U102	10 mIU/mL				
	FHC-103	25 mIU/mL*	Urine	Midstream	No Box	CE
	FHC-F103	20 mIU/mL				
	FHC-U103	10 mIU/mL				
	FHC-201	20 mIU/mL, 25 mIU/mL*	S/P/U	Dipstick	50 T/100 T	CE/HC/ANVISA
	FHC-U201	10 mIU/mL	S/P/U	Dipstick	50 T/100 T	CE/ANVISA
	FHC-211	20 mIU/mL, 25 mIU/mL*	S/P/U	Dipstick (Canister Pack)	25 T	CE
FHC-U211	10 mIU/mL					
FHC-202	20 mIU/mL, 25 mIU/mL*	S/P/U	Cassette	40 T	CE/FDA/HC/TGA	
FHC-U202	10 mIU/mL	S/P/U	Cassette	40 T	CE	
FHC-402	25 mIU/mL*	WB/S/P	Cassette	40 T	CE	
FHC-U402	10 mIU/mL					
FHC-802	25 mIU/mL	Oral Fluid	Cassette	10 T	CE	
FHC-803	25 mIU/mL	Oral Fluid	Midstream	20 T	CE	
<b>LH Ovulation</b>	FLH-101	35 mIU/mL, 40 mIU/mL*	Urine	Dipstick	50 T	CE/HC
	FLH-U101	30 mIU/mL				
	FLH-111	35 mIU/mL, 40 mIU/mL*	Urine	Dipstick (Canister Pack)	25 T	CE
	FLH-U111	30 mIU/mL				
	FLH-102	35 mIU/mL, 40 mIU/mL*	Urine	Cassette	40 T	CE/HC
	FLH-U102	30 mIU/mL				
	FLH-103	40 mIU/mL	Urine	Midstream	No Box	CE
FLH-M103	35 mIU/mL					
FLH-U103	30 mIU/mL					
<b>FSH Follicle Stimulating Hormone</b>	FFS-101	25 mIU/mL	Urine	Dipstick	50 T	CE
	FFS-102	25 mIU/mL	Urine	Cassette	40 T	CE
	FFS-103	25 mIU/mL	Urine	Midstream	2 T	CE

\* Standard Cut-off ; HC: Health Canada ; TGA: Australia TGA ; ANVISA: Brazil ANVISA



# Fertility

## For Diagnostic Use

### Female Fertility

	Cat. No.	Cut-Off	Specimen	Format	Pack	Certificates
<b>AMH Anti-Mullerian Hormone</b>	FAMH-402	1-7 ng/mL	WB/S/P	Cassette	10 T	CE
<b>Fetal Fibronectin (fFN)</b>	FFF-502	/	Vaginal Secretion	Cassette	25 T	CE/ANVISA
<b>Insulin-like Growth Factor-binding Protein 1 (iGFBP-1)</b>	FIG-502	/	Vaginal Secretion	Cassette	25 T	CE/ANVISA
<b>iGFBP-1 and fFN</b>	FIF-502	/	Vaginal Secretion	Cassette	25 T	CE
<b>Cortisol (COR)</b>	FCOR-802 FCOR-803	/	Oral Fluid Oral Fluid	Cassette Midstream	25 T	CE
☆ <b>Placental alpha Microglobulin-1 (PAMG-1)</b>	FPAM-502	/	Vaginal Swab	Cassette	10 T	CE
☆ <b>Estradiol (E2)</b>	FE2-101 FE2-102 FE2-114	5 ng/mL	Urine	Dipstick Cassette Midstream	50 T 40 T 40 T	CE

	Cat. No.		Specimen	Format	Pack	Certificates
<b>Toxo</b>	ITG-302	IgG	S/P	Cassette	40 T	Non-CE
	ITG-402		WB/S/P			
	ITM-302	IgM	S/P	Cassette	40 T	Non-CE
	ITM-402		WB/S/P			
	ITGM-302	IgG/IgM	S/P	Cassette	40 T	CE0123
	ITGM-402		WB/S/P			
ITGM-325	IgG/IgM Combo	S/P	Cassette	25 T	Non-CE	
ITGM-425		WB/S/P				
<b>Rubella</b>	IRG-302	IgG	S/P	Cassette	40 T	Non-CE
	IRG-402		WB/S/P			
	IRM-302	IgM	S/P	Cassette	40 T	CE0123 Non-CE
	IRM-402		WB/S/P			
	IRGM-302	IgG/IgM	S/P	Cassette	40 T	Non-CE
	IRGM-402		WB/S/P			
IRGM-325	IgG/IgM Combo	S/P	Cassette	25 T	Non-CE	
IRGM-425		WB/S/P				
<b>CMV</b>	ICG-302	IgG	S/P	Cassette	40 T	Non-CE
	ICG-402		WB/S/P			
	ICM-302	IgM	S/P	Cassette	40 T	CE0123 Non-CE
	ICM-402		WB/S/P			
	ICGM-302	IgG/IgM	S/P	Cassette	40 T	Non-CE
	ICGM-402		WB/S/P			
ICGM-325	IgG/IgM Combo	S/P	Cassette	25 T	Non-CE	
ICGM-425		WB/S/P				
<b>HSV 1/2</b>	ISG-302	IgG	S/P	Cassette	40 T	Non-CE
	ISG-402		WB/S/P			
	ISM-302	IgM	S/P	Cassette	40 T	Non-CE
	ISM-402		WB/S/P			
	ISGM-302	IgG/IgM	S/P	Cassette	40 T	Non-CE
	ISGM-402		WB/S/P			
ISGM-325	IgG/IgM Combo	S/P	Cassette	25 T	Non-CE	
ISGM-425		WB/S/P				
<b>ToRCH Combo (Toxo, Rubella, CMV, HSV 1/2)</b>	ITOG-345	IgG Combo	S/P	Cassette	25 T	Non-CE
	ITOG-445		WB/S/P			
	ITOM-345	IgM Combo	S/P	Cassette	25 T	CE0123 Non-CE
	ITOM-445		WB/S/P			
	ITOGM-345	IgG/IgM Combo	S/P	Cassette	25 T	Non-CE
	ITOGM-445		WB/S/P			
ITOGM-385	IgG/IgM Combo	S/P	Cassette	25 T	Non-CE	
ITOGM-485		WB/S/P				
<b>Strep B</b>	ISB-501		Swab	Dipstick	25 T	CE
	ISB-502		Swab	Cassette	20 T	CE

### Male Fertility

<b>SP-10 Male Fertility Sperm Concentration</b>	OSP-902	15 million/mL	Sperm	Cassette	1 T/2 T	CE
	OSC-902					

ANVISA: Brazil ANVISA

# Gastrointestinal Diseases

## For Diagnostic Use

### Gastrointestinal Diseases

	Cat. No.		Specimen	Format	Pack	Certificates
<b>Adenovirus, Rotavirus, Norovirus &amp; Astrovirus</b>	IAD-602	Adenovirus	Feces	Cassette	25 T	CE
	IRO-602	Rotavirus	Feces	Cassette	25 T	CE/HC
	INO-602	Norovirus	Feces	Cassette	10 T	CE
	IAS-602	Astrovirus	Feces	Cassette	10 T	CE
	IRAC-625	Rotavirus & Adenovirus Combo	Feces	Cassette	25 T	CE/HC/ANVISA
	INRA-635	Norovirus, Rotavirus & Adenovirus Combo	Feces	Cassette	10 T	CE/HC
	IMVD-645	Norovirus, Rotavirus, Adenovirus & Astrovirus Combo	Feces	Cassette	10 T	CE
<b>Entamoeba histolytica, Giardia lamblia &amp; Cryptosporidium</b>	IEH-602	<i>Entamoeba histolytica</i>	Feces	Cassette	10 T	CE/ANVISA
	ICGC-625	<i>Crypto &amp; Giardia Combo</i>	Feces	Cassette	10 T	CE/ANVISA
	ICR-602	<i>Cryptosporidium</i>	Feces	Cassette	10 T	CE
	IGL-602	<i>Giardia Lamblia</i>	Feces	Cassette	10 T	CE
	IEGC-602	<i>Entamoeba, Giardia, Crypto in 1 window</i>	Feces	Cassette	10 T	CE
	IEGC-635	<i>Entamoeba, Giardia, Crypto Combo in 3 windows</i>	Feces	Cassette	10 T	CE
<b>Enterovirus</b>	IEV-602	Antigen	Feces	Cassette	10 T	CE
<b>EV71 IgM</b>	IEVM-402	IgM	WB/S/P	Cassette	25 T	CE
<b>Campylobacter</b>	ICAM-602		Feces	Cassette	10 T	CE
<b>Clostridium difficile</b>	ICDG-602	GDH	Feces	Cassette	10 T	
	ICDT-625B	Toxin A&B Combo	Feces	Cassette	10 T	CE/ANVISA
	ICD-635B	GDH, Toxin A&B Combo	Feces	Cassette	10 T	
<b>H. pylori</b>	IHP-302	Antibody	S/P	Cassette	40 T	CE
	IHP-401	Antibody	WB/S/P	Dipstick	50T	CE/TGA
	IHP-402	Antibody	WB/S/P	Cassette	40 T	CE/HC/TGA/ANVISA
	☆ IHPM-402	IgM	WB/S/P	Cassette	25T	CE
	IHP-601	Antigen	Feces	Dipstick	25 T	CE/TGA
	IHP-602	Antigen	Feces	Cassette	25 T	CE/HC/TGA/ANVISA
	IHT-625	H.pylori/Transferrin Combo	Feces	Cassette	10 T	CE
	☆ IHP-802	Antigen	Oral fluid	Cassette	20T	CE
<b>Vibrio cholerae</b>	IVCA-602	VC O1	Feces	Cassette	10 T	
	IVCB-602	VC O139	Feces	Cassette	10 T	
	IVCAB-625	VC O1/O139 Combo	Feces	Cassette	10 T	CE
	IVCA-602	O1	Feces	Cassette	10 T	
	IVCAI-602	O1 Inaba	Feces	Cassette	10 T	
	IVCAO-602	O1 Ogawa	Feces	Cassette	10 T	
<b>Shigella</b>	ISHF-602	<i>Shigella Flexneri</i>	Feces	Cassette	10 T	
	ISHS-602	<i>Shigella Sonnei</i>	Feces	Cassette	10 T	CE
	ISH-625	<i>Shigella Flexneri &amp; Sonnei Combo</i>	Feces	Cassette	10 T	
<b>Bacterial Diarrhea</b>	IMBD-675	<i>Shigella/Salmonella/C.diff</i>	Feces	Cassette	20 T	CE
	IMBDA-675	<i>Shigella/Cholerae/C.diff</i>				

☆ Under Development ; HC: Health Canada ; TGA: Australia TGA ; ANVISA: Brazil ANVISA



# Tropical Diseases

## For Diagnostic Use

### Tropical Diseases

	Cat. No.		Specimen	Format	Pack	Certificates
Chagas IgG	ICHA-302	IgG	S/P	Cassette	40 T	CE
	ICHA-402	IgG	WB/S/P	Cassette	40 T	
Chikungunya	ICHI-302	IgG/IgM	S/P	Cassette	40 T	CE
	ICHI-402	IgG/IgM	WB/S/P	Cassette	40 T	
	☆ ICHI-425(SSW)	IgG/IgM	WB/S/P	Cassette	25 T	
	☆ ICHIG-402	Antigen	WB/S/P	Cassette	25 T	
Dengue	IDEN-402	IgG/IgM	WB/S/P	Cassette	10 T	CE/ANVISA
	IDES-402	NS1	WB/S/P	Cassette	10 T	
	IDEC-425	IgG/IgM & NS1 Combo	WB/S/P	Cassette	25 T	
Zika	IZIB-402	IgG/IgM	WB/S/P	Cassette	10 T	CE
	IZIG-402	NS1	WB/S/P	Cassette	10 T	CE
	IZIC-425	IgG/IgM & NS1 Combo	WB/S/P	Cassette	10 T	CE/ANVISA
Dengue, Chikungunya & Zika Combo	ICZ-425	Chikungunya/Zika	WB/S/P	Cassette	25 T	CE
	IDCZ-435	3 Windows	WB/S/P	Cassette	25 T	
	☆ IDZC-445	4 Windows	WB/S/P	Cassette	25 T	
Filariasis	IFIL-302	IgG/IgM	S/P	Cassette	40 T	CE
	IFIL-402	IgG/IgM	WB/S/P	Cassette	40 T	
	☆ IFILG-402	Antigen	WB/S/P	Cassette	25 T	
Typhoid	ITY-302	IgG/IgM	S/P	Cassette	40 T	CE
	ITY-402	IgG/IgM	WB/S/P	Cassette	40 T	CE/HC
	ITYG-402	IgG	WB/S/P	Dipstick	25 T	CE
	ITYM-402	IgM	WB/S/P	Dipstick	25 T	CE
	ITY-401	IgG/IgM	WB/S/P	Dipstick	50 T	CE
Salmonella	ISTY-602	<i>Salmonella typhi</i> Antigen	Feces	Cassette	25 T	CE
	ISPT-602	<i>Salmonella paratyphi</i> Antigen	Feces	Cassette	25 T	
	ISTP-625	<i>Salmonella typhi</i> & <i>paratyphi</i> Antigen Combo	Feces	Cassette	10 T	
	☆ ISTPB-425	<i>Salmonella typhi</i> & <i>paratyphi B</i> Antibody Combo	WB/S/P	Cassette	25 T	
	ISTPB-625	<i>Salmonella typhi</i> & <i>paratyphi B</i> Antigen Combo	Feces	Cassette	10 T	
Leishmania	ILEI-402	IgG/IgM	WB/S/P	Cassette	40 T	CE
Leptospira	ILEP-402	IgG/IgM	WB/S/P	Cassette	40 T	CE/HC
	☆ ILEPM-402	IgM	WB/S/P	Cassette	25 T	CE
	☆ ILEP-425	IgG/IgM	WB/S/P	Cassette	25 T	CE
	☆ ILEM-425	IgM Semi-quantitative	WB/S/P	Cassette	25 T	CE
Malaria	IMA-401	P.f.	WB	Dipstick	50 T	CE
	IMA-402	P.f.	WB	Cassette	40 T	CE
	☆ IMAB-402	Antibody	WB/S/P	Cassette	25T	CE
	IMPN-402	P.f./Pan	WB	Cassette	25 T	CE/HC/ANVISA
	IMPV-402	P.f./P.v.	WB	Cassette	25 T	CE/HC/ANVISA
	IMPVF-402	P.f./P.v. /Pan	WB	Cassette	25 T	CE/HC

☆ Under Development ; HC:Health Canada ; ANVISA: Brazil ANVISA



# Hepatitis & STIs & Blood Banking

## For Diagnostic Use

### Hepatitis Markers

	Cat. No.		Specimen	Format	Pack	Certificates
Hepatitis A (HAV)	IHA-402	IgM	WB/S/P	Cassette	25 T	CE
	IHAGM-425	IgG/IgM Combo	WB/S/P	Cassette	25 T	
Hepatitis B (HBV)	IHBSG-402	HBsAg	WB/S/P	Cassette	40 T	CE2934/ANVISA
	IHBSG-301	HBsAg	S/P	Dipstick	50 T	
	IHBSG-302	HBsAg	S/P	Cassette	40 T	
	IHBSG-401	HBsAg	WB/S/P	Dipstick	50 T	
	IHBSB-401	HBsAb	WB/S/P	Dipstick	50 T	
	IHBSB-402	HBsAb	WB/S/P	Cassette	40 T	
	IHBSB-301	HBsAb	S/P	Dipstick	50 T	
	IHBSB-302	HBsAb	S/P	Cassette	40 T	
	IHBCB-302	HBcAb	S/P	Cassette	40 T	
	IHBEB-302	HBeAb	S/P	Cassette	40 T	
	IHBEG-302	HBeAg	S/P	Cassette	40 T	
Hepatitis C (HCV)	IHC-301		S/P	Dipstick	50 T	Non-CE
	IHC-302		S/P	Cassette	40 T	
	IHC-401		WB/S/P	Dipstick	50 T	
	IHC-402		WB/S/P	Cassette	40 T	
Hepatitis E (HEV)	☆ IHE-102	Antigen	Urine	Cassette	25 T	CE
	IHE-302	IgG/IgM	S/P	Cassette	40 T	
	☆ IHEM-302	IgM	S/P	Cassette	25 T	

### Sexually Transmitted Infections (STIs)

HIV	IHI-402	HIV 1, 2	WB/S/P	Cassette	40 T	Non-CE
	IHI-302	HIV 1, 2	S/P	Cassette	40 T	
	IHI-401	HIV 1, 2	WB/S/P	Dipstick	50 T	
	IHI-402S	HIV 1, 2 (Single Use kit)	WB	Cassette	1 T	
	IHI-T401	HIV 1, 2, O	WB/S/P	Dipstick	50 T	
	IHI-T402	HIV 1, 2, O	WB/S/P	Cassette	40 T	
	IHI-T402S	HIV 1, 2, O (Single Use kit)	WB	Cassette	1 T	
	IHIG-402	HIV p24 Antigen	WB/S/P	Cassette	40 T	
	IHIBG-425	HIV 1, 2 & p24 Combo	WB/S/P	Cassette	25 T	
	IHIBG-402	HIV 1, 2 & p24	WB/S/P	Cassette	25 T	
	IHIBG-425(SSW)	HIV 1.2 & p24 Combo	WB/S/P	Cassette	25 T	
	IHIBG-T402	HIV 1, 2, O & HIV p24 Combo	WB/S/P	Cassette	25 T	
	IHI-403	HIV 1, 2	WB	Device	1/10 T	
	IHI-102	HIV 1, 2	Urine	Cassette	25 T	
IHI-802	HIV 1, 2	Oral fluid	Cassette	20 T		
☆ IHI-803	HIV 1, 2	Oral Fluid	Device	25 T		
Syphilis	☆ ISY-102		Urine	Cassette	25 T	CE
	ISY-301		S/P	Dipstick	50 T	CE
	ISY-302		S/P	Cassette	40 T	CE
	ISY-401		WB/S/P	Dipstick	50 T	CE
	ISY-402		WB/S/P	Cassette	40 T	CE/ANVISA
Candida albicans & Trichomonas Vaginalis	ICA-502	<i>Candida albicans</i>	Swab	Cassette	10 T	CE
	ITV-502	<i>Trichomonas Vaginalis</i>	Vaginal Swab	Cassette	10 T	
	☆ ICT-525	<i>Candida albicans &amp; Trichomonas Vaginalis</i> Combo	Vaginal Swab	Cassette	20 T	
Gonorrhea, Gardnerella Vaginalis & Chlamydia	☆ IGO-502	Gonorrhea	Swab	Cassette	20 T	CE
	☆ IGV-502	<i>Gardnerella Vaginalis</i>	Vaginal Swab	Cassette	20 T	CE
	ICH-502	Chlamydia	Swab/Urine	Cassette	20 T	CE0123
	IGC-525	Gonorrhea & Chlamydia Combo	Swab	Cassette	10 T	Non-CE

### Blood Banking

HAV, HBsAg, HCV, HIV & Syphilis	☆ IHAS-425	HAV IgM & Syphilis Combo	WB/S/P	Cassette	25 T	CE
	☆ IHAS-435	HAV IgG/ IgM & Syphilis Combo	WB/S/P	Cassette	25 T	CE
	IHBC-325	HBsAg & HCV Combo	S/P	Cassette	25 T	Non-CE
	IHBC-425	HBsAg & HCV Combo	WB/S/P	Cassette	25 T	Non-CE
	IHSB-402	HIV/Syphilis/HBsAg Combo	WB/ S / P	Cassette	25 T	Non-CE
	IMID-325	Syphilis & HIV1.2 Combo	S/P	Cassette	25 T	Non-CE
	IISC-325	Syphilis & HIV1.2.O Combo	S/P	Cassette	25 T	Non-CE
	IISC-425	Syphilis & HIV1.2.O Combo	WB/S/P	Cassette	25 T	ANVISA
	IISC-402	Syphilis & HIV1.2 (in one strip)	WB/S/P	Cassette	40 T	ANVISA
	☆ IISH-435	HIV/Syphilis/hCG Combo	WB/S/P	Cassette	25 T	Non-CE
	IBCH-335	HBsAg, HCV & HIV Combo	S/P	Cassette	25 T	Non-CE
	IBCH-435	HBsAg, HCV & HIV1.2 Combo	WB/S/P	Cassette	25 T	Non-CE
	ICBH-402	HCV, HBsAg & HIV1.2 Combo	WB/S/P	Cassette	25 T	Non-CE
	IMID-345	HBsAg, HCV, HIV & Syphilis Combo	S/P	Cassette	25 T	Non-CE
IMID-445	HBsAg, HCV, HIV & Syphilis Combo	WB/S/P	Cassette	25 T	Non-CE	

☆ " Under Development ; ANVISA: Brazil ANVISA

# Respiratory Tract Diseases

## For Diagnostic Use

### Respiratory Tract Diseases

	Cat. No.		Specimen	Format	Pack	Certificates	
<b>Strep A</b>	IST-501	(Control Line in Red)	Throat Swab	Dipstick	25 T	CE	
	IST-502	(Control Line in Red)		Cassette	20 T	CE/ANVISA	
	ISTB-501	(Control Line in Blue)		Dipstick	25 T	CE	
	ISTB-502	(Control Line in Blue)		Cassette	20 T	CE/HC	
<b>Legionella pneumophila &amp; Streptococcus pneumoniae</b>	ILEG-102	<i>L. pneumophila</i>	Urine	Cassette	25 T	CE	
	ISP-102	<i>S. pneumoniae</i>			10 T		
	ISLC-125	<i>S. pneumoniae</i> & <i>pneumophila</i> Combo			10 T		
<b>Cryptococcus Antigen</b>	ICRG-402		WB/S/P/CSF	Cassette	10 T	CE	
☆	<b>Melioidosis (<i>Burkholderia pseudomallei</i>) IgG/IgM</b>	IMBP-402		WB/S/P	Cassette	25 T	CE
☆	<b>Mycoplasma Genitalium (MG) IgG</b>	IMGG-402		WB/S/P	Cassette	25 T	CE
<b>Bordetella Pertussis Antigen</b>	IBP-502		Nasopharyngeal Swab	Cassette	20 T	CE	
<b>Mycoplasma pneumoniae</b>	IMP-502	Antigen	Swab	Cassette	20 T	CE/HC	
	IMPM-402	IgM	WB/S/P	Cassette	40 T	CE/HC	
	IMP-425	IgG/IgM Combo	WB/S/P	Cassette	25 T	CE	
<b>Epstein - Barr Virus (EBV)</b>	IECG-402	EBV VCA IgG	WB/S/P	Cassette	10 T	CE	
	IENG-402	EBNA IgG	WB/S/P	Cassette	10 T		
	IECNG-425	EBV VCA & EBNA IgG Combo	WB/S/P	Cassette	10 T		
<b>MONO</b>	IMO-402		WB/S/P	Cassette	25 T	CE/HC	
<b>Adenovirus</b>	IAD-502	Antigen	Swab	Cassette	20 T	CE/ANVISA	
<b>Influenza A+B, H1N1 &amp; H5N1</b>	IFLA-501	Flu A	Swab / Nasal Aspirate	Dipstick	25 T	CE	
	IFLA-502	Flu A	Swab / Nasal Aspirate	Cassette	20 T	CE	
	IIN-501	Flu A+B	Swab / Nasal Aspirate	Dipstick	25 T	CE	
	IIN-502	Flu A+B	Swab / Nasal Aspirate	Cassette	20 T	CE/HC/ANVISA	
	IIN-502(QUK)	Flu A+B	Swab / Nasal Aspirate	Cassette	20 T	CE	
	IFA-502	H1N1 Antigen	Swab	Cassette	20 T	CE	
	IH5N-502	H5N1 Antigen	Swab	Cassette	20 T	CE	
	IINA-525	Flu A+B & H1N1 Combo	Swab	Cassette	10 T	CE/HC/ANVISA	
	IFH5-525	Flu A+B & H5N1 Combo	Swab	Cassette	20 T	CE	
IINA5-535	FLU A+B & H1N1 & H5N1 Combo	Swab	Cassette	20 T	CE		
<b>Human Parainfluenza Virus (HPIV)</b>	IPIV-502		NP Swab	Cassette	20 T	CE	
<b>Human Metapneumovirus (HMPV)</b>	IHMPV-502		NP Swab	Cassette	20 T	CE	
<b>Respiratory Syncytial Virus Antigen (RSV)</b>	IRS-502		NP Swab/Nasal Aspirate	Cassette	20 T	CE/HC/ANVISA	
<b>Rhinovirus</b>	IRHV-502		NP Swab	Cassette	20 T	CE	

☆ " Under Development ; HC:Health Canada ; ANVISA: Brazil ANVISA



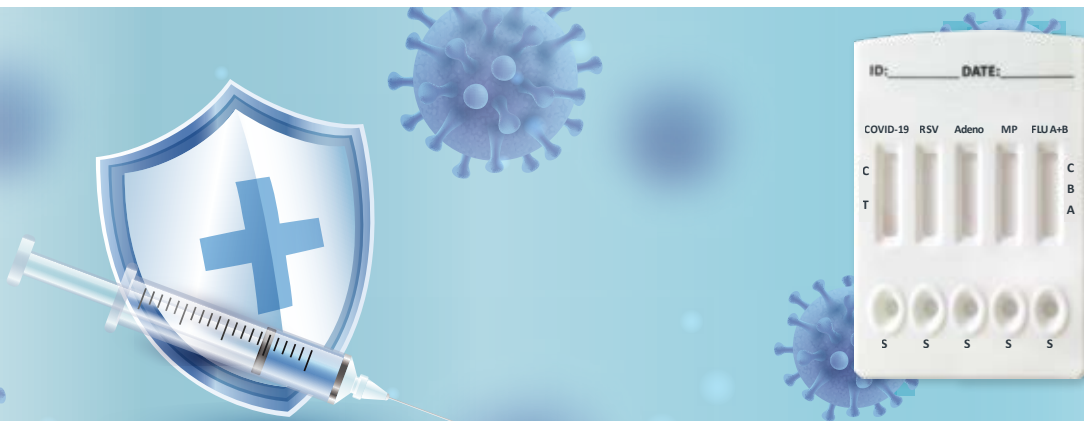
# Respiratory Tract Diseases

## For Diagnostic Use

### Respiratory Tract Diseases

	Cat. No.		Specimen	Format	Pack	Certificates
<b>COVID-19 Antigen (SARS-CoV-2)</b>	ICOV-501	(ICOV-511)	NP Swab	Strip	50 T	CE
	ICOV-502	(INCP-502/INCP-G502)	Swab	Cassette	20 T	CE/HC/ANVISA
	INCP-502-N		Nasal Swab	Cassette	20 T	CE/TGA/ANVISA
	ICOV-802		Oral fluid	Cassette	20 T	CE/TGA/ANVISA
	ICOV-803		Oral fluid	Device	20 T	CE
	ICOV-804	Corona Lollipop Test	Oral fluid	Device	20 T	CE
<b>COVID-19, Influenza A+B, RSV, Adenovirus, M.Pneumoniae, Rhinovirus HPIV &amp; HMPV Antigen</b>	IRIC-525	RSV&Flu A+B Combo	Swab/Nasal Aspirate	Cassette	10 T	CE
	IARC-525	Adeno&RSV Combo	NP Swab	Cassette	10 T	CE
	IARI-535	Adenovirus, RSV and Flu A+B Combo	NP Swab	Cassette	10 T	CE/HC
	ICIC-525	COVID-19 and Flu A+B Combo	NP Swab	Cassette	20 T	CE/ANVISA
	ISIC-525	SARS-CoV-2 and Flu A+B Combo	NP Swab	Cassette	20 T	CE
	ISIR-535	SARS-CoV-2/Flu A+B/RSV Combo	Swab	Cassette	20 T	CE/ANVISA
	IRT-545	SARS-CoV-2/Flu A+B/RSV/Adeno Combo	Swab	Cassette	20 T	CE
	IRT-555	SARS-CoV-2/Flu A+B/RSV/Adeno/ M.pneumoniae Combo	Swab	Cassette	20 T	CE
	IRTA-545	Adeno/RSV/HMPV/Flu A+B Combo	NP Swab	Cassette	20 T	CE
	IRTA-555	Adeno/RSV/HMPV/SARS-CoV-2/ Flu A+B Combo	NP Swab	Cassette	20 T	CE
	IRTB-555	Adenovirus/RSV/HMPV/HPIV/ Flu A+B Combo	NP Swab	Cassette	20 T	CE
	IRTC-5X5(X:2-8) IRT9-555	Multiplex Respiratory Antigen	Swab	Cassette	20 T	CE
	IRTC-5X5(SSW) (X:2-9)	Multiplex Respiratory Antigen	Swab	Cassette	20 T	CE
<b>COVID-19 IgG/IgM Antibody</b>	INCP-402		WB/S/P	Cassette	25 T	CE
	INCP-402B		WB/S/P	Cassette	25/40 T	CE/ANVISA
	INCP-411B		WB/S/P	Strip	200 T	CE/ANVISA
	ICOV-402	High sensitivity	WB/S/P	Cassette	40 T	CE
	ICOV-411	High sensitivity	WB/S/P	Strip	200 T	CE
<b>COVID-19 S-RBD &amp; Neutralization Antibody</b>	INCPG-402	IgG (S-RBD & N protein)	WB/S/P	Cassette	25 T	CE
	INCPG-411	IgG (S-RBD & N protein)	WB/S/P	Strip	200 T	CE
	ICSG-402	S-RBD IgG	WB/S/P	Cassette	25 T	CE/ANVISA
	ICN-402	Neutralization Antibody	WB/S/P	Cassette	25 T	CE
<b>COVID-19 &amp; M.pneumoniae Antibody Combo</b>	INMC-425	IgG/IgM Combo	WB/S/P	Cassette	25 T	CE
	INMCG-425	IgG Combo				

HC: Health Canada ; TGA: Australia TGA ; ANVISA: Brazil ANVISA



# Other Infectious Diseases

## For Diagnostic Use

### Other Infectious Diseases

	Cat. No.		Specimen	Format	Pack	Certificates
<b>Monkeypox Virus Antibody</b>	IMXB-402	IgG/IgM	WB/S/P	Cassette	25 T	CE
<b>Monkeypox Virus Antigen</b>	IMXG-402		WB/S/P / Rash Exudate Swab / Throat Swab	Cassette	25 T	CE
<b>Measles</b>	IME-402		WB/S/P	Cassette	25 T	CE
<b>Brucella Abortus &amp; Melitensis</b>	IBA-402	Brucella Abortus Antigen	WB/S/P	Cassette	25 T	CE
	IBAGM-402	Brucella Abortus IgG/IgM	WB/S/P	Cassette	25 T	CE
	IBAM-425	Brucella Abortus & Melitensis Antibody Combo	WB/S/P	Cassette	25 T	CE
<b>Lyme IgG/IgM</b>	ILY-402		WB/S/P	Cassette	10 T	CE/HC
<b>Scrub Typhus IgG/IgM</b>	ITSU-402		WB/S/P	Cassette	10 T	CE
<b>Tetanus</b>	ITE-402		WB/S/P	Cassette	40 T	CE
<b>Tuberculosis (TB)</b>	ITB-401		WB/S/P	Dipstick	50 T	CE
	ITB-402		WB/S/P	Cassette	40 T	
☆ <b>Schistosoma Antibody</b>	ISC-402		WB/S/P	Cassette	25 T	CE
<b>West Nile Virus IgG/IgM</b>	IWNGN-402		WB/S/P	Cassette	25 T	CE
☆ <b>Yellow Fever Virus IgG/IgM</b>	IYF-402		WB/S/P	Cassette	25 T	CE
<b>Mycobacterium Tuberculosis Antigen</b>	IMT-902		Sputum	Cassette	25 T	CE
<b>Varicella Zoster Virus</b>	IVZM-402	IgM	WB/S/P	Cassette	25 T	CE

☆ " Under Development ; HC:Health Canada



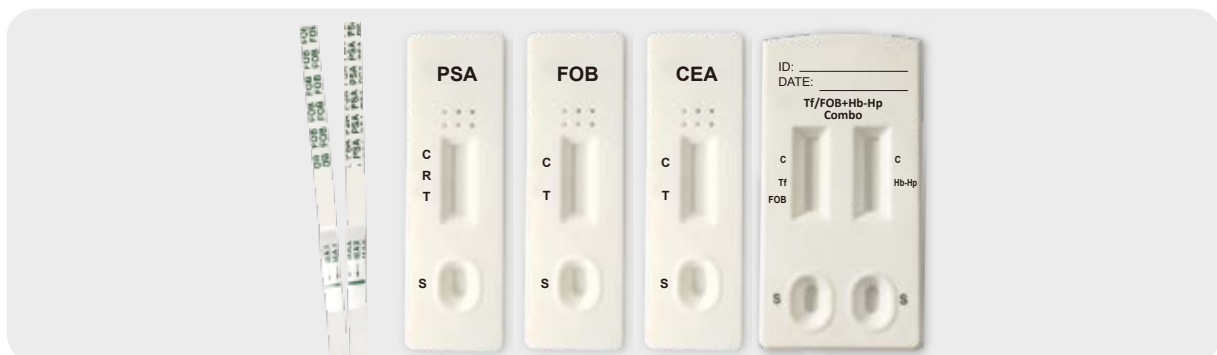
# Tumor Markers

## For Diagnostic Use

### Tumor Markers

	Cat. No.	Specimen	Format	Pack	Cut-Off	Certificates
<b>Alpha-Fetoprotein (AFP)</b>	TAF-402	WB/S/P	Cassette	40 T	10 ng/ml	CE
☆ <b>Bladder Tumor Antigen</b>	TBT-102	Urine	Cassette	25 T	See Insert	CE
<b>Carcinoembryonic Antigen (CEA)</b>	TCE-402	WB/S/P	Cassette	40 T	5 ng/ml	CE
<b>Prostate Specific Antigen (PSA)</b>	TPS-Q401	WB/S/P	Dipstick	25 T	4 ng/ml	CE0123
	TPS-Q402	WB/S/P	Cassette	10 T	4 ng/ml	CE0123
	TPS-402 (Semi-Quantitative)	WB/S/P	Cassette	10 T	3-10 ng/ml	CE0123
	TPS-403	WB	Device	1/10T	4 ng/mL	NON-CE
<b>Cancer Markers</b>	T125-402 CA125	WB/S/P	Cassette	10 T	40 U/mL	CE
	T153-402 CA15-3	WB/S/P	Cassette	10 T	30 U/mL	CE
	T199-402 CA19-9	WB/S/P	Cassette	10 T	40 U/mL	CE
<b>Fecal Occult Blood (FOB)</b>	TFO-601	Feces	Dipstick	25 T	25 ng/mL, 40 ng/mL,	CE/TGA
	TFO-602	Feces	Cassette	25 T	50 ng/mL*, 100 ng/mL	CE/TGA/ANVISA
<b>Calprotectin &amp; FOB Combo</b>	TCFC-625	Feces	Cassette	10 T	See Insert	CE
<b>Hemoglobin (Hb) &amp; Hemoglobin-Haptoglobin (Hb-Hp) Combo</b>	THPB-625	Feces	Cassette	25 T	50 ng/ml, 6 µg/g	CE/TGA
<b>Transferrin &amp; FOB Combo</b>	TTFC-625	Feces	Cassette	25 T	See Insert	CE/TGA
<b>Transferrin, FOB &amp; Hb-Hp Combo</b>	TTFH-635	Feces	Cassette	25 T	See Insert	CE/TGA
☆ <b>FOB/Transferrin/Calprotectin/Lactoferrin Combo</b>	TFTCL-645	Feces	Cassette	25 T	See Insert	CE
<b>HPV Antigen</b>	THPV-502	Cervical Swab	Cassette	20 T	See Insert	CE
	☆ THPV-T502 16/18	Cervical Swab	Cassette	20 T	/	CE

☆ " Under Development ; \* Standard Cut-off ; TGA: Australia TGA ; ANVISA: Brazil ANVISA



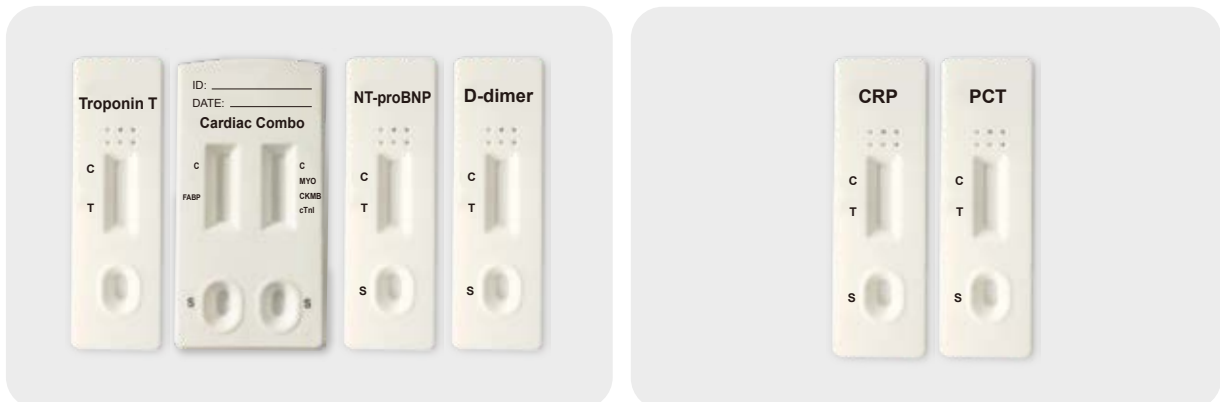
# Cardiac Markers

## For Diagnostic Use

### Cardiac Markers

	Cat. No.	Specimen	Format	Pack	Cut-Off	Certificates
<b>Troponin I (cTnI)</b>	CTI-402	WB/S/P	Cassette	10 T	0.5 ng/mL	CE/ANVISA
<b>Troponin T (cTnT)</b>	CTNT-402	WB/S/P	Cassette	10 T	0.5 ng/mL	CE
<b>CK-MB</b>	CCK-402	WB/S/P	Cassette	10 T	5 ng/mL	CE
<b>Myoglobin</b>	CMY-402	WB/S/P	Cassette	10 T	50 ng/mL	CE
<b>Heart Type Fatty Acid-Binding Protein (H-FABP)</b>	CFA-402	WB/S/P	Cassette	10 T	8 ng/mL	CE
<b>Myoglobin, CK-MB &amp; cTnI Combo</b>	CMA-435	WB/S/P	Cassette	10 T	See Insert	CE
<b>H-FABP &amp; cTnI Combo</b>	CFC-425	WB/S/P	Cassette	25 T	See Insert	CE
<b>H-FABP &amp; Myoglobin/CK-MB/cTnI Combo</b>	CMA-445	WB/S/P	Cassette	10 T	See Insert	CE
<b>NT-proBNP</b>	CBN-402	WB/S/P	Cassette	10 T	0.45 ng/mL	CE
<b>D-Dimer</b> ☆	CDM-401	WB/P	Dipstick	25 T	/	CE
	CDM-402	WB/P	Cassette	10 T	500 ng/mL	CE/HC
<b>C-reactive Protein (CRP)</b>	CCR-401	WB/S/P	Dipstick	10 T	10 µg/mL	CE
	CCR-402	WB/S/P	Cassette	10 T	10 µg/mL*, 0.5 µg/mL	CE/ANVISA
	CCR-U401(Semi-Quantitative)	WB/S/P	Dipstick	10 T	10-40-80 µg/mL	CE/TGA
	CCR-U402(Semi-Quantitative)	WB/S/P	Cassette	10 T	10-40-80 µg/mL	CE/HC/TGA
	CCR-T402(Semi-Quantitative)	WB/S/P	Cassette	10 T	10-30 µg/mL	CE
<b>Procalcitonin (PCT)</b>	CPC-302	S/P	Cassette	10 T	1 ng/mL	CE
	CPC-402	WB/S/P	Cassette	10 T	1 ng/mL	CE/HC/TGA/ANVISA

☆ Under Development ; \* Standard Cut-off HC: Health Canada ; TGA: Australia TGA ; ANVISA: Brazil ANVISA





## For Employment and Insurance (E&I)

Drugs of Abuse (Specimen: Urine)

Alcohol

Drugs of Abuse (Specimen: Oral Fluid)



# Drugs of Abuse

## For Employment and Insurance (E&I)

### Drugs of Abuse (Specimen: Urine)

	Cat. No.	Format	Pack	Cut-off	Certificates
<b>AB-PINACA (ABP)</b>	DABP-102	Cassette	40 T	10 ng/mL*	CE
	DABP-114	Panel	40 T		
	DABP-101	Dipstick	50 T		
<b>Acetaminophen (ACE)</b>	DAC-102	Cassette	40 T	5000 ng/mL*	CE/HC
	DAC-114	Panel	40 T		
	DAC-101	Dipstick	50 T		
<b>7-Aminoclonazepam (7-ACL)</b>	DACL-102	Cassette	40 T	300 ng/mL*	CE
	DACL-114	Panel	40 T		
	DACL-101	Dipstick	50 T		
<b>Alprazolam (ALP)</b>	DALP-102	Cassette	40 T	100 ng/mL*	CE
	DALP-114	Panel	40 T		
	DALP-101	Dipstick	50 T		
<b>Amphetamine (AMP)</b>	DAM-102	Cassette	40 T	300 ng/mL, 500 ng/mL, 1000 ng/mL*	CE/FDA
	DAM-114	Panel	40 T		
	DAM-101	Dipstick	50 T		
☆ <b>Amitriptyline (AMTL)</b>	DAMT-102	Cassette	40 T	/	CE
	DAMT-114	Panel	40 T		
	DAMT-101	Dipstick	50 T		
<b>α-Pyrrolidinovalerophenone (α-PVP)</b>	DAP-102	Cassette	40 T	1000 ng/mL*, 500 ng/mL, 300 ng/mL	CE
	DAP-114	Panel	40 T		
	DAP-101	Dipstick	50 T		
☆ <b>Arecoline (ARC)</b>	DAR-102	Cassette	40 T	/	CE
	DAR-114	Panel	40 T		
	DAR-101	Dipstick	50 T		
<b>Aripiprazole (ARP)</b>	DARP-102	Cassette	40 T	500 ng/mL	CE
	DARP-114	Panel	40 T		
	DARP-101	Dipstick	50 T		
<b>Barbiturate (BAR)</b>	DBA-102	Cassette	40 T	200 ng/mL, 300 ng/mL*	CE/FDA
	DBA-114	Panel	40 T		
	DBA-101	Dipstick	50 T		
<b>Benzhexol (BOL)</b>	DBOL-102	Cassette	40 T	25000 ng/mL	CE
	DBOL-114	Panel	40 T		
	DBOL-101	Dipstick	50 T		
☆ <b>Bupropion (BPP)</b>	DBPP-102	Cassette	40 T	/	CE
	DBPP-114	Panel	40 T		
	DBPP-101	Dipstick	50 T		
☆ <b>Bupropion (BPP)</b>	DBPP-102	Cassette	40 T	/	CE
	DBPP-114	Panel	40 T		
	DBPP-101	Dipstick	50 T		

☆ Under Development ; \* Standard Cut-off ; HC:Health Canada

# Drugs of Abuse

## For Employment and Insurance (E&I)

### Drugs of Abuse (Specimen: Urine)

	Cat. No.	Format	Pack	Cut-off	Certificates
<b>Buprenorphine (BUP)</b>	DBU-102	Cassette	40 T	5 ng/mL, 10 ng/mL*	CE/FDA
	DBU-114	Panel	40 T		
	DBU-101	Dipstick	50 T		
<b>Benzodiazepines (BZO)</b>	DBZ-102	Cassette	40 T	100 ng/mL, 200 ng/mL, 300 ng/mL*	CE/FDA
	DBZ-114	Panel	40 T		
	DBZ-101	Dipstick	50 T		
<b>Cathine (CAT)</b>	DCA-102	Cassette	40 T	150 ng/mL*	CE
	DCA-114	Panel	40 T		
	DCA-101	Dipstick	50 T		
<b>Caffeine (CAF)</b>	DCAF-102	Cassette	40 T	1000 ng/mL*	CE
	DCAF-114	Panel	40 T		
	DCAF-101	Dipstick	50 T		
<b>Carisoprodol (CAR)</b>	DCAR-102	Cassette	40 T	2000 ng/mL	CE
	DCAR-114	Panel	40 T		
	DCAR-101	Dipstick	50 T		
<b>25B-NBOMe/25INBOMe (2C-B)</b>	DCB-102	Cassette	40 T	/	CE
	DCB-114	Panel	40 T		
	DCB-101	Dipstick	50 T		
<b>Carbamazepine (CBZ)</b>	DCBZ-102	Cassette	40 T	1000 ng/mL	CE
	DCBZ-114	Panel	40 T		
	DCBZ-101	Dipstick	50 T		
<b>Cannabinol (CNB)</b>	DCNB-102	Cassette	40 T	500 ng/mL	CE
	DCNB-114	Panel	40 T		
	DCNB-101	Dipstick	50 T		
<b>Carfentanyl (CFYL)</b>	DCFY-102	Cassette	40 T	500 ng/mL*, 250 ng/mL	CE
	DCFY-114	Panel	40 T		
	DCFY-101	Dipstick	50 T		
<b>Citalopram (CIT)</b>	DCIT-102	Cassette	40 T	500 ng/mL	CE
	DCIT-114	Panel	40 T		
	DCIT-101	Dipstick	50 T		
<b>Clonazepam (CLO)</b>	DCL-102	Cassette	40 T	150 ng/mL, 400 ng/mL*	CE
	DCL-114	Panel	40 T		
	DCL-101	Dipstick	50 T		
<b>3-Chloromethcathinone (3-CMC)</b>	DCMC-102	Cassette	40 T	3000 ng/mL	CE
	DCMC-114	Panel	40 T		
	DCMC-101	Dipstick	50 T		

"☆" Under Development ; \* Standard Cut-off

# Drugs of Abuse

## For Employment and Insurance (E&I)

### Drugs of Abuse (Specimen: Urine)

	Cat. No.	Format	Pack	Cut-off	Certificates
<b>Cocaine (COC)</b>	DCO-102	Cassette	40 T	100 ng/mL, 150 ng/mL, 300 ng/mL*	CE/FDA
	DCO-114	Panel	40 T		
	DCO-101	Dipstick	50 T		
☆ <b>Codeine (COD)</b>	DCOD-102	Cassette	40 T	300 ng/mL	N/A
	DCOD-114	Panel	40 T		
	DCOD-101	Dipstick	50 T		
<b>Cotinine (COT)</b>	DCT-102	Cassette	40 T	10 ng/mL, 50 ng/mL, 100 ng/mL, 200 ng/mL*, 500 ng/mL	CE
	DCT-114	Panel	40 T		
	DCT-101	Dipstick	50 T		
☆ <b>Diphenhydramine (DHM)</b>	DDH-102	Cassette	40 T	/	CE
	DDH-114	Panel	40 T		
	DDH-101	Dipstick	50 T		
<b>Diazepam (DIA)</b>	DDI-102	Cassette	40 T	300 ng/mL*	CE
	DDI-114	Panel	40 T		
	DDI-101	Dipstick	50 T		
☆ <b>Diphenoxylate (DIP)</b>	DDIP-102	Cassette	40 T	5000 ng/mL	CE
	DDIP-114	Panel	40 T		
	DDIP-101	Dipstick	50 T		
☆ <b>Dextromethorphan (DXM)</b>	DDXM-102	Cassette	40 T	20 ng/mL	CE
	DDXM-114	Panel	40 T		
	DDXM-101	Dipstick	50 T		
<b>Ethylenediamine- dimethylphosphinic acid (EDDP)</b>	DED-102	Cassette	40 T	300 ng/mL*, 100 ng/mL	CE/FDA
	DED-114	Panel	40 T		
	DED-101	Dipstick	50 T		
<b>Ethyl Glucuronide (ETG)</b>	DET-102	Cassette	40 T	500 ng/mL*, 1000 ng/mL	CE
	DET-114	Panel	40 T		
	DET-101	Dipstick	50 T		
<b>Etomidate (ETO)</b>	DETO-102	Cassette	40 T	1000 ng/mL	CE
	DETO-114	Panel	40 T		
	DETO-101	Dipstick	50 T		
<b>Escitalopram (ETP)</b>	DETP-102	Cassette	40 T	1000 ng/mL	CE
	DETP-114	Panel	40 T		
	DETP-101	Dipstick	50 T		
<b>Fluoketamine (FKET)</b>	DFKE-102	Cassette	40 T	1000 ng/mL	CE
	DFKE-114	Panel	40 T		
	DFKE-101	Dipstick	50 T		
☆ <b>Fluvoxamine (FLV)</b>	DFLV-102	Cassette	40 T	/	CE
	DFLV-114	Panel	40 T		
	DFLV-101	Dipstick	50 T		
<b>Fluoxetine (FLX)</b>	DFLX-102	Cassette	40 T	500 ng/mL	CE
	DFLX-114	Panel	40 T		
	DFLX-101	Dipstick	50 T		

☆ " Under Development ; \* Standard Cut-off ; HC:Health Canada

# Drugs of Abuse

## For Employment and Insurance (E&I)

### Drugs of Abuse (Specimen: Urine)

	Cat. No.	Format	Pack	Cut-off	Certificates
☆	<b>7-Aminoflunitrazepam (FLZ)</b>				
	DFLZ-102	Cassette	40 T	500 ng/mL	CE
	DFLZ-114	Panel	40 T		
DFLZ-101	Dipstick	50 T			
	<b>Fentanyl (FYL)</b>				
	DFY-102	Cassette	40 T	10 ng/mL ,20 ng/mL* , 100 ng/mL ,200 ng/mL	CE/HC
	DFY-114	Panel	40 T		
	DFY-101	Dipstick	50 T		
	DFY-A102	Cassette	25 T	1ng/mL	CE
	DFY-A102C	Cassette	25 T	1ng/mL	CE
	DFY-A102-A	Cassette	25 T	0.5ng/mL	CE
DFY-A102C-A	Cassette	25 T	0.5ng/mL	CE	
	<b>Gabapentin (GAB)</b>				
	DGAB-102	Cassette	40 T	2000 ng/mL	CE
	DGAB-114	Panel	40 T		
DGAB-101	Dipstick	50 T			
☆	<b>Gamma-Hydroxybutyric acid (GHB)</b>				
	DGHB-G102	Cassette	40 T	/	CE/HC
	DGHB-G114	Panel	40 T		
DGHB-G101	Dipstick	50 T			
☆	<b>Hydrocodone (HCD)</b>				
	DHCD-102	Cassette	40 T	/	CE
	DHCD-114	Panel	40 T		
DHCD-101	Dipstick	50 T			
	<b>Hydromorphone (HMO)</b>				
	DHM-102	Cassette	40 T	/	CE
	DHM-114	Panel	40 T		
DHM-101	Dipstick	50 T			
☆	<b>Kavalactones (KAVA)</b>				
	DKA-102	Cassette	40 T	/	CE
	DKA-114	Panel	40 T		
DKA-101	Dipstick	50 T			
	<b>Ketamine (KET)</b>				
	DKE-102	Cassette	40 T	100 ng/mL, 300 ng/mL, 500 ng/mL, 1000 ng/mL*	CE
	DKE-114	Panel	40 T		
DKE-101	Dipstick	50 T			
	<b>Kratom (KRA)</b>				
	DKRA-102	Cassette	40 T	300 ng/mL	CE
	DKRA-114	Panel	40 T		
DKRA-101	Dipstick	50 T			
	<b>Lysergic Acid Diethylamide (LSD)</b>				
	DLS-102	Cassette	40 T	10 ng/mL, 20 ng/mL* , 50 ng/mL	CE
	DLS-114	Panel	40 T		
DLS-101	Dipstick	50 T			
☆	<b>Lamotrigine (LTG)</b>				
	DLTG-102	Cassette	40 T	/	CE
	DLTG-114	Panel	40 T		
DLTG-101	Dipstick	50 T			
	<b>6-Monoacetylmorphine (6-MAM)</b>				
	DMA-102	Cassette	40 T	10 ng/mL	CE
	DMA-114	Panel	40 T		
DMA-101	Dipstick	50 T			
	<b>Methcathinone (MCAT)</b>				
	DMCA-102	Cassette	40 T	500 ng/mL	CE
	DMCA-114	Panel	40 T		
DMCA-101	Dipstick	50 T			

☆ " Under Development ; \* Standard Cut-off ; HC:Health Canada

# Drugs of Abuse

## For Employment and Insurance (E&I)

### Drugs of Abuse (Specimen: Urine)

	Cat. No.	Format	Pack	Cut-off	Certificates
<b>Ecstasy (MDMA)</b>	DMD-102	Cassette	40 T	500 ng/mL*, 1000 ng/mL	CE/FDA
	DMD-114	Panel	40 T		
	DMD-101	Dipstick	50 T		
<b>Tenamfetamine (MDA)</b>	DMDA-102	Cassette	40 T	500 ng/mL*	CE
	DMDA-114	Panel	40 T		
	DMDA-101	Dipstick	50 T		
<b>Methylenedioxypropylone (MDPV)</b>	DMDP-102	Cassette	40 T	1000 ng/mL*, 500 ng/mL, 300 ng/mL	CE
	DMDP-114	Panel	40 T		
	DMDP-101	Dipstick	50 T		
<b>Midazolam (MDZ)</b>	DMDZ-102	Cassette	50 T	10000 ng/mL	CE/FDA/HC
	DMDZ-114	Panel	40 T		
	DMDZ-101	Dipstick	40 T		
<b>Methamphetamine (MET)</b>	DME-102	Cassette	40 T	300 ng/mL, 500 ng/mL, 1000 ng/mL*	CE/FDA/HC
	DME-114	Panel	40 T		
	DME-101	Dipstick	50 T		
<b>Mephedrone HCl (MEP)</b>	DMEP-102	Cassette	40 T	100 ng/mL*	CE
	DMEP-114	Panel	40 T		
	DMEP-101	Dipstick	50 T		
<b>Mescaline (MES)</b>	DMES-102	Cassette	40 T	100 ng/mL*, 300 ng/mL	CE
	DMES-114	Panel	40 T		
	DMES-101	Dipstick	50 T		
<b>Morphine (MOP)</b>	DMO-102	Cassette	40 T	100 ng/mL, 300 ng/mL*	CE/FDA
	DMO-114	Panel	40 T		
	DMO-101	Dipstick	50 T		
<b>Methylphenidate (MPD)</b>	DMP-102	Cassette	40 T	1000 ng/mL*, 300 ng/mL	CE
	DMP-114	Panel	40 T		
	DMP-101	Dipstick	50 T		
<b>Meperidine (MPRD)</b>	DMPR-102	Cassette	40 T	100 ng/mL	CE
	DMPR-114	Panel	40 T		
	DMPR-101	Dipstick	50 T		
<b>Methaqualone (MQL)</b>	DMQ-102	Cassette	40 T	300 ng/mL*	CE
	DMQ-114	Panel	40 T		
	DMQ-101	Dipstick	50 T		
<b>Methadone (MTD)</b>	DMT-102	Cassette	40 T	100 ng/mL, 200 ng/mL, 300 ng/mL*	CE/FDA
	DMT-114	Panel	40 T		
	DMT-101	Dipstick	50 T		
<b>Mirtazapine (MTZ)</b>	DMTZ-102	Cassette	40 T	500 ng/mL	CE
	DMTZ-114	Panel	40 T		
	DMTZ-101	Dipstick	50 T		
<b>N,N-Dimethyltryptamine (NND)</b>	DNND-102	Cassette	40 T	1000 ng/mL	CE
	DNND-114	Panel	40 T		
	DNND-101	Dipstick	50 T		
<b>Opiates (OPI)</b>	DOP-102	Cassette	40 T	2000 ng/mL*, 300 ng/mL	CE/FDA
	DOP-114	Panel	40 T		
	DOP-101	Dipstick	50 T		

\* Standard Cut-off ; HC: Health Canada



# Drugs of Abuse

## For Employment and Insurance (E&I)

### Drugs of Abuse (Specimen: Urine)

	Cat. No.	Format	Pack	Cut-off	Certificates
<b>Oxycodone (OXY)</b>	DOX-102	Cassette	40 T	100 ng/mL*	CE/FDA
	DOX-114	Panel	40 T		
	DOX-101	Dipstick	50 T		
<b>Olanzapine (OZP)</b>	DOZP-102	Cassette	40 T	1000 ng/mL*	CE
	DOZP-114	Panel	40 T		
	DOZP-101	Dipstick	50 T		
<b>Papaverine (PAP)</b>	DPAP-102	Cassette	40 T	500 ng/mL*	CE
	DPAP-114	Panel	40 T		
	DPAP-101	Dipstick	50 T		
<b>Phencyclidine (PCP)</b>	DPC-102	Cassette	40 T	25 ng/mL*	CE/FDA
	DPC-114	Panel	40 T		
	DPC-101	Dipstick	50 T		
<b>Pregabalin (PGB)</b>	DPG-102	Cassette	40 T	500 ng/mL*	CE
	DPG-114	Panel	40 T		
	DPG-101	Dipstick	50 T		
<b>Propoxyphene (PPX)</b>	DPP-102	Cassette	40 T	300 ng/mL*	CE
	DPP-114	Panel	40 T		
	DPP-101	Dipstick	50 T		
<b>Paroxetine (PRT)</b>	DPRT-102	Cassette	40 T	1000 ng/mL*	CE
	DPRT-114	Panel	40 T		
	DPRT-101	Dipstick	50 T		
<b>Psilocybin (PY)</b>	DPY-102	Cassette	40 T	500 ng/mL*	CE
	DPY-114	Panel	40 T		
	DPY-101	Dipstick	50 T		
<b>Quetiapine (QTP)</b>	DQTP-102	Cassette	40 T	1000 ng/mL*	CE
	DQTP-114	Panel	40 T		
	DQTP-101	Dipstick	50 T		
<b>Repaglinide (RPG)</b>	DRP-102	Cassette	40 T	/	CE
	DRP-114	Panel	40 T		
	DRP-101	Dipstick	50 T		
<b>Risperidone (RPD)</b>	DRPD-102	Cassette	40 T	150 ng/mL*	CE
	DRPD-114	Panel	40 T		
	DRPD-101	Dipstick	50 T		
<b>Scopolamine (SCOP)</b>	DSC-102	Cassette	40 T	500 ng/mL*	CE
	DSC-114	Panel	40 T		
	DSC-101	Dipstick	50 T		

☆ Under Development ; \* Standard Cut-off ; HC:Health Canada



# Drugs of Abuse

## For Employment and Insurance (E&I)

### Drugs of Abuse (Specimen: Urine)

	Cat. No.	Format	Pack	Cut-off	Certificates
<b>Synthetic Marijuana (K2)</b>	DSM-102	Cassette	40 T	50 ng/mL*, 30 ng/mL	CE
	DSM-114	Panel	40 T		
	DSM-101	Dipstick	50 T		
<b>Sertraline (STL)</b>	DSTL-102	Cassette	40 T	/	CE
	DSTL-114	Panel	40 T		
	DSTL-101	Dipstick	50 T		
<b>Tapentadol (TAP)</b>	DTAP-102	Cassette	40 T	1000 ng/mL	CE
	DTAP-114	Panel	40 T		
	DTAP-101	Dipstick	50 T		
<b>Tricyclic Antidepressants (TCA)</b>	DTC-102	Cassette	40 T	500 ng/mL, 1000 ng/mL*	CE/FDA
	DTC-114	Panel	40 T		
	DTC-101	Dipstick	50 T		
<b>Marijuana (THC)</b>	DTH-102	Cassette	40 T	25 ng/mL, 20 ng/mL, 50 ng/mL*, 150 ng/mL, 300 ng/mL	CE/FDA/HC
	DTH-114	Panel	40 T		
	DTH-101	Dipstick	50 T		
<b>Tianeptine (TIA)</b>	DTIA-102	Cassette	40 T	1000ng/mL	CE
	DTIA-114	Panel	40 T		
	DTIA-101	Dipstick	50 T		
<b>Tilidine (TLD)</b>	DTLD-102	Cassette	40 T	50 ng/mL*	CE
	DTLD-114	Panel	40 T		
	DTLD-101	Dipstick	50 T		
<b>Tiletamine (TLTM)</b>	DTLT-102	Cassette	40 T	1000ng/mL	CE
	DTLT-114	Panel	40 T		
	DTLT-101	Dipstick	50 T		
<b>Tramadol (TML)</b>	DTM-102	Cassette	40 T	100 ng/mL*, 200 ng/mL, 300 ng/mL	CE
	DTM-114	Panel	40 T		
	DTM-101	Dipstick	50 T		
<b>Tropicamide (TRO)</b>	DTRO-102	Cassette	40 T	350 ng/mL*	CE
	DTRO-114	Panel	40 T		
	DTRO-101	Dipstick	50 T		
<b>Trazodone (TZD)</b>	DTZD-102	Cassette	40 T	200 ng/mL	CE
	DTZD-114	Panel	40 T		
	DTZD-101	Dipstick	50 T		
<b>UR-144</b>	DUR-102	Cassette	40 T	25 ng/mL	CE
	DUR-114	Panel	40 T		
	DUR-101	Dipstick	50 T		

"☆" Under Development ; \* Standard Cut-off ; HC: Health Canada



# Drugs of Abuse

## For Employment and Insurance (E&I)

### Drugs of Abuse (Specimen: Urine)

	Cat. No.	Format	Pack	Cut-off	Certificates
<b>Xylazine (XYL)</b>	DXYL-102	Cassette	40 T	1000 ng/mL*	CE/HC
	DXYL-114	Panel	40 T		
	DXYL-101	Dipstick	50 T		
<b>Zaleplon (ZAL)</b>	DZAL-102	Cassette	40 T	100 ng/mL	CE
	DZAL-114	Panel	40 T		
	DZAL-101	Dipstick	50 T		
<b>Zolpidem (ZOL)</b>	DZO-102	Cassette	40 T	50 ng/mL*	CE
	DZO-114	Panel	40 T		
	DZO-101	Dipstick	50 T		
<b>Zopiclone (ZOP)</b>	DZOP-102	Cassette	40 T	50 ng/mL*	CE/HC
	DZOP-114	Panel	40 T		
	DZOP-101	Dipstick	50 T		

	Cat. No.	Pack	Certificates
Multi-Drug 2~17 Drugs Rapid Test Cassette	DOA-125~1175	25 T	CE/HC/ANVISA
Multi-Drug 2-17 Drugs Rapid Test Cassette	DOA-125~1175(SSW)	25 T	CE
Multi-Drug 2~20 Drugs Rapid Test Panel	DOA-124~1204	25 T	CE/FDA/HC/ANVISA
Multi-Drug 2-12 Drugs Rapid Test Panel (1 Min Result)	DOA-1X4(K) (X:2-12)	25 T	CE
Multi-Drug 2-12 Drugs Rapid Test Panel ☆	DOA-1X4(ECO) (X:2-12)	25 T	CE
Multi-Drug 2-16 Drugs Rapid Test Panel	DOA-1X4(WP) (X:2-16)	25 T	CE
Multi-Drug 2-8 Drugs Rapid Test Panel (1 Min Result)	DOA-1X4(L) (X:2-8)	25 T	CE
Multi-Drug 2~15 Drugs Rapid Test 1-Step Cup	DOA-127~1157-A1	25 T	CE/FDA/HC/ANVISA
Multi-Drug 2~12 Drugs Rapid Test 1-Step Cup	DOA-127~1127-A2	25 T	CE
Multi-Drug 2~22 Drugs Rapid Test 1-Step Cup	DOA-127~1227-A3	25 T	CE/FDA/HC/ANVISA
Multi-Drug 2~8 Drugs Rapid Test 1-Step Cup	DOA-127~187-A4	25 T	CE
Multi-Drug 2~18 Drugs Rapid Test 1-Step Cup	DOA-127~1187-A10	25 T	CE/ANVISA
Multi-Drug 2-27 Drugs Rapid Test 1-Step Cup	DOA-127~1277-A12	25 T	CE
Multi-Drug 2~12 Drugs Rapid Test Key Cup	DOA-127~1127-B1	25 T	CE/HC/ANVISA
Multi-Drug 2-27 Drugs Rapid Test 1-Step Cup	DOA-1X7-A13 (X:2-27)	25 T	CE
Multi-Drug 2~16 Drugs Rapid Test Key Cup	DOA-127~1167-B2	25 T	CE/HC/ANVISA
Multi-Drug 2-22 Drugs Rapid Test Key Cup	DOA-1X7-B4 (X:2-22)	25 T	CE
Adulteration Dipstick (Analytes: OX,NIT,SG,GLU,pH,CRE)	DAT-111	25 T	CE

\* Standard Cut-off ; HC: Health Canada ; ANVISA: Brazil ANVISA



**A1 1-Step Cup**



**A2 1-Step Cup**



**A3 1-Step Cup**



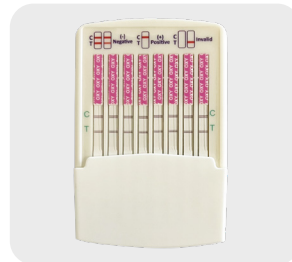
**A4 1-Step Cup**



**A12 1-Step Cup**



**B4 Key Cup**



**Panel (Waterproof)**



**Dipstick, Cassette, Panel**

# Drugs of Abuse

## For Employment and Insurance (E&I)

### Drugs of Abuse (Specimen: Oral Fluid)

	Cat. No.	Format	Pack	Cut-Off	Certificates
<b>Amphetamine (AMP)</b>	DAM-802	Cassette	25 T	50 ng/mL*	CE
	DAM-803	Device	25 T		
<b>-Pyrrolidinovalerophenone ( -PVP )</b>	DAP-802	Cassette	25 T	300 ng/mL*	CE
	DAP-803	Device	25 T		
<b>Barbiturates (BAR)</b>	DBA-802	Cassette	25 T	50 ng/mL*	CE
	DBA-803	Device	25 T		
<b>Buprenorphine (BUP)</b>	DBU-802	Cassette	25 T	10 ng/mL*	CE
	DBU-803	Device	25 T		
<b>Benzodiazepines (BZO)</b>	DBZ-802	Cassette	25 T	20 ng/mL , 30 ng/mL* , 50 ng/mL	CE
	DBZ-803	Device	25 T		
<b>Cocaine (COC)</b>	DCO-802	Cassette	25 T	20 ng/mL*	CE
	DCO-803	Device	25 T		
<b>Carfentanyl (CFYL)</b>	DCFY-802	Cassette	25 T	50 ng/mL*	CE
	DCFY-803	Device	25 T		
<b>Cotinine (COT)</b>	DCT-802	Cassette	25 T	20 ng/mL*	CE
	DCT-803	Device	25 T		
<b>Fentanyl (FYL)</b>	DFY-802	Cassette	25 T	50 ng/ml* , 20 ng/ml	CE
	DFY-803	Device	25 T		
☆ <b>Hydrocodone (HCD)</b>	DHCD-802	Cassette	25 T	/	CE
	DHCD-803	Device	25 T		
☆ <b>Hydromorphone (HMO)</b>	DHM-802	Cassette	25 T	/	CE
	DHM-803	Device	25 T		
☆ <b>Kavalactones (KAVA)</b>	DKA-802	Cassette	25 T	/	CE
	DKA-803	Device	25 T		
<b>Ketamine (KET)</b>	DKE-802	Cassette	25 T	50 ng/mL*	CE
	DKE-803	Device	25 T		
<b>6-Monoacetylmorphine (6-MAM)</b>	DMA-802	Cassette	25 T	10 ng/mL*	CE
	DMA-803	Device	25 T		
<b>Ecstasy (MDMA)</b>	DMD-802	Cassette	25 T	50 ng/mL*	CE
	DMD-803	Device	25 T		
<b>Methylenedioxypyrovalerone (MDPV)</b>	DMDP-802	Cassette	25 T	300 ng/mL*	CE
	DMDP-803	Device	25 T		
<b>Methamphetamine (MET)</b>	DME-802	Cassette	25 T	50 ng/mL*	CE
	DME-803	Device	25 T		
<b>Methadone (MTD)</b>	DMT-802	Cassette	25 T	30 ng/mL*	CE
	DMT-803	Device	25 T		

☆ " Under Development ; \* Standard Cut-off

# Drugs of Abuse

## For Employment and Insurance (E&I)

### Drugs of Abuse (Specimen: Oral Fluid)

	Cat. No.	Format	Pack	Cut-Off	Certificates
<b>Opiates (OPI)</b>	DOP-802	Cassette	25 T	40 ng/mL*	CE
	DOP-803	Device	25 T		
<b>Oxycodone (OXY)</b>	DOX-802	Cassette	25 T	20 ng/mL*	CE
	DOX-803	Device	25 T		
<b>Phencyclidine (PCP)</b>	DPC-802	Cassette	25 T	10 ng/mL*	CE
	DPC-803	Device	25 T		
<b>Pregabalin (PGB)</b>	DPG-802	Cassette	25 T	500 ng/mL*	CE
	DPG-803	Device	25 T		
<b>Synthetic Marijuana (K2)</b>	DSM-802	Cassette	25 T	25 ng/mL*	CE
	DSM-803	Device	25 T		
<b>Marijuana (THC) (Parent)</b>	DTH-P802	Cassette	25 T	20 ng/mL*, 50 ng/mL	
<b>Marijuana (THC)</b>	DTH-803	Device	25 T	50 ng/mL*, 12 ng/mL	
<b>Tramadol (TML)</b>	DTM-802	Cassette	25 T	30 ng/mL*	CE
	DTM-803	Device	25 T		
<b>Kratom(KRA)</b>	DKRA-802	Cassette	25 T	300 ng/mL*	CE
	DKRA-803	Device	25 T		
<b>Etomidate (ETO)</b>	DETO-802	Cassette	25 T	150 ng/mL*	CE
	DETO-802	Device	25 T		



	Cat. No.	Pack	Certificates
<b>Multi-Drug 2~7 Drugs Rapid Test Device</b>	DSD-823~873-A	25 T	CE/ANVISA
<b>Multi-Drug 2~9 Drugs Rapid Test Device</b>	DSD-823~893-B	25 T	CE
<b>Multi-Drug 2~12 Drugs Rapid Test Device</b>	DSD-823~8123-D	25 T	CE/HC/ANVISA
<b>Multi-Drug 2~9 Drugs Test Cassette</b>	DSD-825~895-A	25 T	CE
<b>Multi-Drug 2~8 Drugs Test Cassette</b>	DSD-825~885-B	25 T	CE
<b>Multi-Drug 2~12 Drugs Rapid Test Cup</b>	DSD-827~8127	20 T/25 T	CE/ANVISA
<b>Multi-Drug 2~16 Drugs Rapid Test Cup</b>	DSD-827~8167-C	20 T	CE/ANVISA



### Alcohol

	Cat. No.	Specimen	Format	Pack	Cut-off	Certificates
<b>Alcohol (ALC)</b>	DAL-102	Urine	Cassette	40 T	0.02%	CE/HC
	DAL-114	Urine	Panel	40 T	0.02%	CE
	DAL-101	Urine	Dipstick	50 T	0.02%	CE
	DAL-801	Oral Fluid	Dipstick	50 T	0.02%	CE
	DAL-802	Oral Fluid	Cassette	25 T	0.02%	CE/HC
	OAL-914	Breast Milk	Panel	25 T/40 T	0.01%	CE
	OAL-901	Breast Milk	Dipstick	50 T	0.01%	CE

\* Under Development ; \* Standard Cut-off ; HC:Health Canada ; ANVISA: Brazil ANVISA



# Drugs of Abuse

## Harm Reduction & Forensic Use

### Drugs of Abuse (Specimen: Surface - Solid, Urine & Liquid)

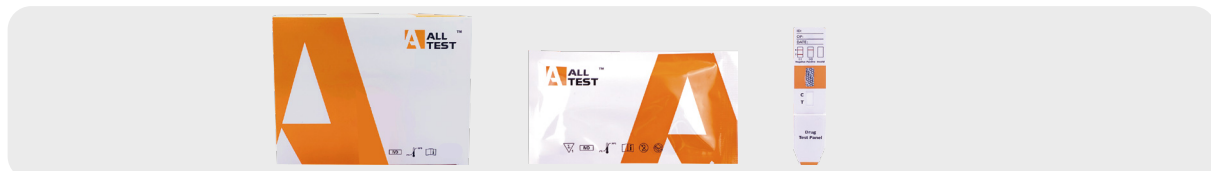
	Cat. No.	Format	Pack	Cut-Off	Certificates
AB-PINACA (ABP)	DABP-X14	Panel	25 T	10 ng/mL	N/A
	DABP-X02	Cassette	25 T	10 ng/mL	N/A
Acetaminophen (ACE)	DAC-X14	Panel	25 T	5000 ng/mL	N/A
Amphetamine (AMP)	DAM-X14	Panel	25 T	1000 ng/mL	N/A
-Pyrrolidinovalerophenone ( -PVP)	DAP-X14	Panel	25 T	1000 ng/mL	N/A
Barbiturate (BAR)	DBA-X14	Panel	25 T	300 ng/mL	N/A
Buprenorphine (BUP)	DBU-X14	Panel	25 T	10 ng/mL	N/A
Benzodiazepines (BZO)	DBZ-X14	Panel	25 T	300 ng/mL	N/A
Cocaine (COC)	DCO-X14	Panel	25 T	300 ng/mL	N/A
Carfentanyl (CFYL)	DCFY-X14	Panel	25 T	500 ng/mL	N/A
Nicotine (NIC)	DCT-X14	Panel	25 T	200 ng/mL	N/A
Diazepam (DIA)	DDI-X14	Panel	25 T	300 ng/mL	N/A
Diphenoxylate (DIP)	DDIP-X14	Panel	25 T	5000 ng/mL	N/A
	DDIP-X02	Cassette	25 T	5000 ng/mL	N/A
Dextromethorphan (DXM)	DDXM-X14	Panel	25 T	200 ng/mL	N/A
	DDXM-X02	Cassette	25 T	200 ng/mL	N/A
Etomidate (ETO)	DETO-X14	Panel	25 T	20 ng/mL	N/A
Etomidate (ETO)	DETO-X02	Cassette	25 T	20 ng/mL	N/A
Fentanyl (FYL)	DFY-X14	Panel	25 T	200 ng/mL	N/A
Ketamine (KET)	DKE-X14	Panel	25 T	1000 ng/mL	N/A
Lysergic Acid Diethylamide (LSD)	DLS-X14	Panel	25 T	20 ng/mL	N/A
6-Monoacetylmorphine (6-MAM)	DMA-X14	Panel	25 T	10 ng/mL	N/A
Ecstasy (MDMA)	DMD-X14	Panel	25 T	500 ng/mL	N/A
Tenamfetamine (MDA)	DMDA-X14	Panel	25 T	500 ng/mL	N/A
Methylenedioxypyrovalerone (MDPV)	DMDP-X14	Panel	25 T	1000 ng/mL	N/A
Methylphenidate (MPD)	DMP-X14	Panel	25 T	300 ng/mL	N/A
Methamphetamine (MET)	DME-X14	Panel	25 T	1000 ng/mL	N/A
Mephedrone HCl (MEP)	DMEP-X14	Panel	25 T	100 ng/mL	N/A
Morphine (MOP)	DMO-X14	Panel	25 T	300 ng/mL	N/A
Methaqualone (MQL)	DMQ-X14	Panel	25 T	300 ng/mL	N/A
Methadone (MTD)	DMT-X14	Panel	25 T	300 ng/mL	N/A
Metomidate (MTO)	DMTO-X14	Panel	25 T	2000 ng/mL	N/A
Metomidate (MTO)	DMTO-X02	Cassette	25 T	2000 ng/mL	N/A
N,N-Dimethyltryptamine (NND)	DNND-X14	Panel	25 T	1000 ng/mL	N/A
	DNND-X02	Cassette	25 T	1000 ng/mL	N/A
Nitazene (NTZ)	DNTZ-X14	Panel	25 T	2000 ng/mL	N/A
	DNTZ-X02	Cassette	25 T	2000 ng/mL	N/A
Oxycodone (OXY)	DOX-X14	Panel	25 T	100 ng/mL	N/A
Opiate (OPI)	DOP-X14	Panel	25 T	2000 ng/mL	N/A
Phencyclidine (PCP)	DPC-X14	Panel	25 T	25 ng/mL	N/A
Propoxyphene (PPX)	DPP-X14	Panel	25 T	300 ng/mL	N/A
Synthetic Marijuana (K2)	DSM-X14	Panel	25 T	50 ng/mL	N/A
Tricyclic Antidepressants (TCA)	DTC-X14	Panel	25 T	1000 ng/mL	N/A
Marijuana (THC)	DTH-X14	Panel	25 T	50 ng/mL	N/A
Tramadol (TML)	DTM-X14	Panel	25 T	100 ng/mL	N/A
Zolpidem (ZOL)	DZO-X14	Panel	25 T	50 ng/mL	N/A

	Cat. No.	Pack	Certificates
Multi-Drug 2~20 Drugs Rapid Test Panel	DOA-X24~X204	25 T	N/A

### Drugs of Abuse (Specimen: Urine & Solid)

	Cat. No.	Format	Pack	Cut-Off	Certificates
Xylazine(XYL)	DXYL-1X02	Cassette	25T	500 ng/mL, 1000 ng/mL	HC
	DXYL-1X14	Panel	25T		
	DXYL-1X01	Dipstick	50T		
Fentanyl(FYL)	DFYL-1X02	Cassette	25T	10 ng/mL	N/A
	DFYL-1X14	Panel	25T		
	DFYL-1X01	Dipstick	50T		
Xylazine(XYL) + Fentanyl(FYL) Combo	DOA-1X02	Cassette	25T	1000 ng/mL 10 ng/mL	N/A
	DOA-1X14	Panel	25T		
	DOA-1X01	Dipstick	50T		

HC:Health Canada



Drugs of Abuse (Specimen: Surface - Solid, Urine & Liquid )

# Drugs of Abuse

## Harm Reduction & Forensic Use

### Drugs of Abuse (Specimen: Whole Blood/Serum/Plasma)

	Cat. No.	Format	Pack	Cut-off	Certificates
Amphetamine (AMP)	DAM-402	Cassette	40 T	80 ng/mL	CE
Barbiturate (BAR)	DBA-402	Cassette	40 T	100 ng/mL	CE
Buprenorphine (BUP)	DBU-402	Cassette	40 T	5 ng/mL	CE
Benzodiazepines (BZO)	DBZ-402	Cassette	40 T	100 ng/mL	CE
Cocaine (COC)	DCO-402	Cassette	40 T	50 ng/mL	CE
Cotinine (COT)	DCT-402	Cassette	40 T	10 ng/mL, 100 ng/mL*	CE
Ethylenediamine-dimethylphosphinic acid (EDDP)	DED-402	Cassette	40 T	50 ng/mL	CE
Fentanyl (FYL)	DFY-402	Cassette	40 T	15 ng/mL	CE
Ketamine (KET)	DKE-402	Cassette	40 T	200 ng/mL	CE
Lysergic Acid Diethylamide (LSD)	DLS-402	Cassette	40 T	20 ng/mL	CE
Ecstasy (MDMA)	DMD-402	Cassette	40 T	50 ng/mL	CE
Tenamfetamine (MDA)	DMDA-402	Cassette	40 T	80 ng/mL	CE
Methylenedioxypropylvalerone (MDPV)	DMDP-402	Cassette	40 T	300 ng/mL	CE
Methamphetamine (MET)	DME-402	Cassette	40 T	70 ng/mL	CE
Morphine (MOP)	DMO-402	Cassette	40 T	40 ng/mL	CE
Methadone (MTD)	DMT-402	Cassette	40 T	40 ng/mL	CE
Oxycodone (OXY)	DOX-402	Cassette	40 T	20 ng/mL	CE
Phencyclidine (PCP)	DPC-402	Cassette	40 T	20 ng/mL	CE
Propoxyphene (PPX)	DPP-402	Cassette	40 T	100 ng/mL	CE
Synthetic Marijuana (K2)	DSM-402	Cassette	40 T	100 ng/mL	CE
Tricyclic Antidepressants (TCA)	DTC-402	Cassette	40 T	300 ng/mL	CE
Marijuana (THC)	DTH-402	Cassette	40 T	35 ng/mL*, 50 ng/mL	CE
Tramadol (TML)	DTM-402	Cassette	40 T	50 ng/mL	CE
	<b>Cat. No.</b>		<b>Pack</b>		<b>Certificates</b>
<b>Multi-Drug 2~17 Drugs Rapid Test Cassette</b>	DOA-425~4175		25 T		CE

\* Standard Cut-off



Drugs of Abuse (Specimen: Whole Blood/Serum/Plasma)



Drugs of Abuse (Specimen: Hair)

### Drugs of Abuse (Specimen: Hair)

	Cat. No.	Format	Pack	Cut-off	Certificates
AB-PINACA (ABP)	DABP-H902	Cassette	10 T	0.2 ng/mg	CE
Cocaine (COC)	DCO-H902	Cassette	10 T	0.5 ng/mg	CE
Cotinine (COT)	DCT-H902	Cassette	10 T	0.2 ng/mg	CE
Methamphetamine (MET)	DME-H902	Cassette	10 T	0.2 ng/mg	CE
Morphine (MOP)	DMO-H902	Cassette	10 T	0.2 ng/mg	CE
6-Monoacetylmorphine (6-MAM)	DMA-H902	Cassette	10 T	0.2 ng/mg	CE
Amphetamine (AMP)	DAM-H902	Cassette	10 T	0.2 ng/mg	CE
Ketamine (KET)	DKE-H902	Cassette	10 T	0.2 ng/mg	CE
Ecstasy (MDMA)	DMD-H902	Cassette	10 T	0.2 ng/mg	CE
Barbiturate (BAR)	DBA-H902	Cassette	10 T	0.2 ng/mg	CE
Benzodiazepines (BZO)	DBZ-H902	Cassette	10 T	0.2 ng/mg	CE
Phencyclidine (PCP)	DPC-H902	Cassette	10 T	0.2 ng/mg	CE
Oxycodone (OXY)	DOX-H902	Cassette	10 T	0.2 ng/mg	CE
Buprenorphine (BUP)	DBU-H902	Cassette	10 T	0.2 ng/mg	CE
Synthetic Marijuana (K2)	DSM-H902	Cassette	10 T	0.2 ng/mg	CE
Methadone (MTD)	DMT-H902	Cassette	10 T	0.2 ng/mg	CE
Marijuana (THC)	DTH-H902	Cassette	10 T	0.2 ng/mg	CE
	<b>Cat. No.</b>		<b>Pack</b>		<b>CE Status</b>
<b>Multi-Drug 2~8 Drugs Rapid Test Cassette</b>	DOA-H925~H985		10 T		CE

\* Standard Cut-off



# Drugs of Abuse

## Harm Reduction & Forensic Use

### Drugs of Abuse (Specimen: Drink)

	Cat. No.	Format	Pack	Cut-Off	Certificates
<b>Barbiturates (BAR)</b>	DBA-D02	Cassette			
	DBA-D01	Dipstick	10T	600 ng/mL	N/A
	DBA-D14	Panel			
<b>Benzodiazepines (BZO)</b>	DBZ-D02	Cassette			
	DBZ-D01	Dipstick	10T	600 ng/mL	N/A
	DBZ-D14	Panel			
<b>Flunitrazepam (FLZ)</b>	DFLZ-D02	Cassette			
	DFLZ-D01	Dipstick	10T	500 ng/mL	N/A
	DFLZ-D14	Panel			
<b>Fentanyl (FYL)</b>	DFY-D02	Cassette			
	DFY-D01	Dipstick	10T	200 ng/mL	N/A
	DFY-D14	Panel			
<b>-Hydroxybutyric acid (GHB)</b>	DGHB-D02	Cassette			
	DGHB-D01	Dipstick	10T	10000 ng/mL	N/A
	DGHB-D14	Panel			
<b>Ketamine (KET)</b>	DKE-D02	Cassette			
	DKE-D01	Dipstick	25T	1000 ng/mL	N/A
	DKE-D14	Panel			
<b>Methamphetamine (MET)</b>	DME-D02	Cassette			
	DME-D01	Dipstick	10T	2000 ng/mL	N/A
	DME-D14	Panel			
<b>Phencyclidine (PCP)</b>	DPC-D02	Cassette			
	DPC-D01	Dipstick	10T	50 ng/mL	N/A
	DPC-D14	Panel			
<b>Scopolamine (SCOP)</b>	DSC-D02	Cassette			
	DSC-D01	Dipstick	10T	2000 ng/mL	N/A
	DSC-D14	Panel			
<b>Tramadol (TML)</b>	DTM-D02	Cassette			
	DTM-D01	Dipstick	10T	600 ng/mL	N/A
	DTM-D14	Panel			
<b>Zolpidem (ZOL)</b>	DZO-D02	Cassette			
	DZO-D01	Dipstick	10T	100 ng/mL	N/A
	DZO-D14	Panel			

	Cat. No.	Pack	Certificates
<b>Drink Drug Check Rapid Test Cassette - 2~9 Analytes</b>	DOA-D25~D95	10 T	N/A
<b>Drink Drug Check Rapid Test Panel - 2~9 Analytes</b>	DOA-D24~D94	10 T	N/A

	Cat. No.	Specimen	Format	Pack	Cut-Off	Certificates
<b>Multi-Drug Rapid Test- 2-5 analytes</b>	DOA-925~955	Breast Milk	Cassette	25T	COC300/CAF2000/COT200/ THC50/ALC 0.01%	N/A



### Drugs Of Abuse (Specimen: Drink)

#### Stain Identification

	Cat. No.	Specimen	Format	Pack	Cut-Off	Certificates
<b>Blood Stain</b>	OBS-901	Stain	Dipstick	50 T	50 ng/mL	Non-CE
	OBS-902	Stain	Cassette	10 T	50 ng/mL	Non-CE
<b>Human Semen</b>	OHS-901	Stain	Dipstick	50 T	4 ng/mL	Non-CE
	OHS-902	Stain	Cassette	40 T	4 ng/mL	Non-CE





## Health Check-Up

Micro-Albumin

HbA1c

SAA & CRP

TSH

Blood Grouping

Vitamin D

Calprotectin



# Health Check-Up



	Cat. No.	Specimen	Format	Pack	Cut-Off	Certificates
<b>Folic Acid</b>	OFA-402	WB	Cassette	25T	/	CE

<b>Ferritin</b>	OFE-402	WB/S/P	Cassette	10 T	30 ng/mL	CE/TGA/ANVISA
	OFE-T402 (Semi-Quantitative)	WB/S/P	Cassette	10 T	13-30 ng/mL	CE



<b>G6PD</b>	OGPD-402	WB	Cassette	25T	/	CE
-------------	----------	----	----------	-----	---	----



<b>Pyridinium</b>	OPYD-102	Urine	Cassette	25T	/	CE
-------------------	----------	-------	----------	-----	---	----



<b>Sickle Cell</b>	OSCD-402	WB	Cassette	25T	/	CE
--------------------	----------	----	----------	-----	---	----

<b>Thyroid Stimulating Hormone (TSH)</b>	OTS-402	WB/S/P	Cassette	40 T	5 µIU/mL	CE
--	---------	--------	----------	------	----------	----

<b>Vitamin</b>	☆ OVB-302	Vitamin B12	S/P	Cassette	25T	/	CE
	☆ OVB-402	Vitamin B12	WB	Cassette	25T	/	CE
	OVD-402	Vitamin D	WB	Cassette	10 T	10-30-100 ng/mL	CE/HC/ANVISA
	OVD-402	Vitamin D	WB/S/P	Cassette	25T	/	CE

<b>HbA1c</b>	OHA-402	WB	Cassette	10 T	6%~9%	CE
--------------	---------	----	----------	------	-------	----



<b>CARBA-5</b>	OCAR-902	Culture	Cassette	25T	/	CE
----------------	----------	---------	----------	-----	---	----



<b>Cyclic Citrullinated Peptide (CCP) Antibody</b>	OCCP-302	S/P	Cassette	25 T	/	CE
--	----------	-----	----------	------	---	----

<b>Calprotectin &amp; Lactoferrin</b>	OCAL-602	Calprotectin	Feces	Cassette	10 T	50 µg/g	CE/ANVISA
	OCAL-T602	Calprotectin Semi-quantitative	Feces	Cassette	10 T	50-200 µg/g	CE
	OIBD-625	Calprotectin and Lactoferrin Combo	Feces	Cassette	10 T	/	CE

<b>Total IgE</b>	OIGE-402	WB/S/P	Cassette	10 T	200 IU/mL	CE
------------------	----------	--------	----------	------	-----------	----

<b>Dust Mite IgE</b>	ODME-402	WB/S/P	Cassette	10 T	0.35 IU/mL	CE
----------------------	----------	--------	----------	------	------------	----

<b>Celiac</b>	OCEA-402	WB/S/P	Cassette	25 T	/	CE
---------------	----------	--------	----------	------	---	----

<b>Rheumatoid Factor</b>	ORF-302	S/P	Cassette	20 T	25 IU/mL	CE
--------------------------	---------	-----	----------	------	----------	----

<b>Micro-Albumin</b>	OMIA-101	Semi-Quantitative	Urine	Dipstick	50 T	20-40-60-80 µg/mL	CE
	OMIA-102	Semi-Quantitative	Urine	Cassette	25 T	20-40-60-80 µg/mL	CE
	OMAL-101	Qualitative	Urine	Dipstick	50 T	20 µg/mL	CE
	OMAL-102	Qualitative	Urine	Cassette	25 T	20 µg/mL	CE

<b>SAA&amp;CRP</b>	OSA-402	SAA	WB/S/P	Cassette	10 T	10 µg/mL	CE
	OCSC-425	SAA & CRP Combo	WB/S/P	Cassette	10 T	10 µg/mL	CE

<b>Blood Grouping</b>	OAB-402	ABO	WB	Cassette	25 T	/	Non-CE
	OABD-402	ABO & RhD Combo	WB	Cassette	25 T	/	CE2934/ANVISA



<b>Alzheimer Disease</b>	OALZ-102		Urine	Cassette	25 T	/	CE
	OALZ-402		WB/S/P	Cassette	25 T	/	CE

“☆” Under Development ; \* Standard Cut-off ; HC:Health Canada ; ANVISA: Brazil ANVISA





RELIABLE TESTS CAN HAVE ONE NAME



**ALLTEST**





---

**Hangzhou AllTest Biotech Co., Ltd.**

Add: No. 550, Yin Hai Street, Hangzhou Economic and Technological Development Area, Hangzhou P.R. China

Tel: +86-571-56267891

Web: [www.alltests.com.cn](http://www.alltests.com.cn)

E-mail: [info@alltests.com.cn](mailto:info@alltests.com.cn)



AllTest Web



Facebook



LinkedIn



Twitter



Youtube